

INSTRUCTOR'S SOLUTIONS MANUAL

DUANE KOUBA
University of California, Davis

THOMAS' CALCULUS FOURTEENTH EDITION


Based on the original work by
George B. Thomas, Jr
Massachusetts Institute of Technology

as revised by
Joel Hass
University of California, Davis

Christopher Heil
Georgia Institute of Technology

Maurice D. Weir
Naval Postgraduate School





This work is protected by United States copyright laws and is provided solely for the use of instructors in teaching their courses and assessing student learning. Dissemination or sale of any part of this work (including on the World Wide Web) will destroy the integrity of the work and is not permitted. The work and materials from it should never be made available to students except by instructors using the accompanying text in their classes. All recipients of this work are expected to abide by these restrictions and to honor the intended pedagogical purposes and the needs of other instructors who rely on these materials.

The author and publisher of this book have used their best efforts in preparing this book. These efforts include the development, research, and testing of the theories and programs to determine their effectiveness. The author and publisher make no warranty of any kind, expressed or implied, with regard to these programs or the documentation contained in this book. The author and publisher shall not be liable in any event for incidental or consequential damages in connection with, or arising out of, the furnishing, performance, or use of these programs.

Reproduced by Pearson from electronic files supplied by the author.

Copyright © 2018, 2014, 2010 Pearson Education, Inc.
Publishing as Pearson, 330 Hudson Street, NY NY 10013

All rights reserved. No part of this publication may be reproduced, stored in a retrieval system, or transmitted, in any form or by any means, electronic, mechanical, photocopying, recording, or otherwise, without the prior written permission of the publisher. Printed in the United States of America.



ISBN-13: 978-0-13-443918-1

ISBN-10: 0-13-443918-X

TABLE OF CONTENTS

1 Functions 1

- 1.1 Functions and Their Graphs 1
- 1.2 Combining Functions; Shifting and Scaling Graphs 9
- 1.3 Trigonometric Functions 19
- 1.4 Graphing with Software 27
 - Practice Exercises 32
 - Additional and Advanced Exercises 40

2 Limits and Continuity 45

- 2.1 Rates of Change and Tangents to Curves 45
- 2.2 Limit of a Function and Limit Laws 49
- 2.3 The Precise Definition of a Limit 59
- 2.4 One-Sided Limits 66
- 2.5 Continuity 72
- 2.6 Limits Involving Infinity; Asymptotes of Graphs 77
 - Practice Exercises 87
 - Additional and Advanced Exercises 93

3 Derivatives 101

- 3.1 Tangents and the Derivative at a Point 101
- 3.2 The Derivative as a Function 107
- 3.3 Differentiation Rules 118
- 3.4 The Derivative as a Rate of Change 123
- 3.5 Derivatives of Trigonometric Functions 129
- 3.6 The Chain Rule 138
- 3.7 Implicit Differentiation 148
- 3.8 Related Rates 156
- 3.9 Linearization and Differentials 161
 - Practice Exercises 167
 - Additional and Advanced Exercises 179

4 Applications of Derivatives 185

- 4.1 Extreme Values of Functions 185
- 4.2 The Mean Value Theorem 195
- 4.3 Monotonic Functions and the First Derivative Test 201
- 4.4 Concavity and Curve Sketching 212
- 4.5 Applied Optimization 238
- 4.6 Newton's Method 253
- 4.7 Antiderivatives 257
 - Practice Exercises 266
 - Additional and Advanced Exercises 280

5 Integrals 287

- 5.1 Area and Estimating with Finite Sums 287
- 5.2 Sigma Notation and Limits of Finite Sums 292
- 5.3 The Definite Integral 298
- 5.4 The Fundamental Theorem of Calculus 313
- 5.5 Indefinite Integrals and the Substitution Method 323
- 5.6 Definite Integral Substitutions and the Area Between Curves 329
 - Practice Exercises 346
 - Additional and Advanced Exercises 357

6 Applications of Definite Integrals 363

- 6.1 Volumes Using Cross-Sections 363
- 6.2 Volumes Using Cylindrical Shells 375
- 6.3 Arc Length 386
- 6.4 Areas of Surfaces of Revolution 394
- 6.5 Work and Fluid Forces 400
- 6.6 Moments and Centers of Mass 410
 - Practice Exercises 425
 - Additional and Advanced Exercises 436

7 Transcendental Functions 441

- 7.1 Inverse Functions and Their Derivatives 441
- 7.2 Natural Logarithms 450
- 7.3 Exponential Functions 459
- 7.4 Exponential Change and Separable Differential Equations 473
- 7.5 Indeterminate Forms and L'Hôpital's Rule 478
- 7.6 Inverse Trigonometric Functions 488
- 7.7 Hyperbolic Functions 501
- 7.8 Relative Rates of Growth 510
 - Practice Exercises 515
 - Additional and Advanced Exercises 529

8 Techniques of Integration 533

- 8.1 Using Basic Integration Formulas 533
- 8.2 Integration by Parts 546
- 8.3 Trigonometric Integrals 560
- 8.4 Trigonometric Substitutions 569
- 8.5 Integration of Rational Functions by Partial Fractions 578
- 8.6 Integral Tables and Computer Algebra Systems 589
- 8.7 Numerical Integration 600
- 8.8 Improper Integrals 611
- 8.9 Probability 623
 - Practice Exercises 632
 - Additional and Advanced Exercises 646

9 First-Order Differential Equations 655

- 9.1 Solutions, Slope Fields, and Euler's Method 655
- 9.2 First-Order Linear Equations 664
- 9.3 Applications 668
- 9.4 Graphical Solutions of Autonomous Equations 673
- 9.5 Systems of Equations and Phase Planes 680
 - Practice Exercises 686
 - Additional and Advanced Exercises 694

10 Infinite Sequences and Series 697

- 10.1 Sequences 697
- 10.2 Infinite Series 709
- 10.3 The Integral Test 717
- 10.4 Comparison Tests 726
- 10.5 Absolute Convergence; The Ratio and Root Tests 736
- 10.6 Alternating Series and Conditional Convergence 742
- 10.7 Power Series 752
- 10.8 Taylor and Maclaurin Series 765
- 10.9 Convergence of Taylor Series 771
- 10.10 The Binomial Series and Applications of Taylor Series 779
 - Practice Exercises 788
 - Additional and Advanced Exercises 799

11 Parametric Equations and Polar Coordinates 805

- 11.1 Parametrizations of Plane Curves 805
- 11.2 Calculus with Parametric Curves 814
- 11.3 Polar Coordinates 824
- 11.4 Graphing Polar Coordinate Equations 829
- 11.5 Areas and Lengths in Polar Coordinates 837
- 11.6 Conic Sections 843
- 11.7 Conics in Polar Coordinates 854
 - Practice Exercises 864
 - Additional and Advanced Exercises 875

12 Vectors and the Geometry of Space 881

- 12.1 Three-Dimensional Coordinate Systems 881
- 12.2 Vectors 886
- 12.3 The Dot Product 892
- 12.4 The Cross Product 897
- 12.5 Lines and Planes in Space 904
- 12.6 Cylinders and Quadric Surfaces 913
 - Practice Exercises 918
 - Additional and Advanced Exercises 926

13 Vector-Valued Functions and Motion in Space 933

- 13.1 Curves in Space and Their Tangents 933
- 13.2 Integrals of Vector Functions; Projectile Motion 940
- 13.3 Arc Length in Space 949
- 13.4 Curvature and Normal Vectors of a Curve 953
- 13.5 Tangential and Normal Components of Acceleration 961
- 13.6 Velocity and Acceleration in Polar Coordinates 967
 - Practice Exercises 970
 - Additional and Advanced Exercises 977

14 Partial Derivatives 981

- 14.1 Functions of Several Variables 981
- 14.2 Limits and Continuity in Higher Dimensions 991
- 14.3 Partial Derivatives 999
- 14.4 The Chain Rule 1008
- 14.5 Directional Derivatives and Gradient Vectors 1018
- 14.6 Tangent Planes and Differentials 1024
- 14.7 Extreme Values and Saddle Points 1033
- 14.8 Lagrange Multipliers 1049
- 14.9 Taylor's Formula for Two Variables 1061
- 14.10 Partial Derivatives with Constrained Variables 1064
 - Practice Exercises 1067
 - Additional and Advanced Exercises 1085

15 Multiple Integrals 1091

- 15.1 Double and Iterated Integrals over Rectangles 1091
- 15.2 Double Integrals over General Regions 1094
- 15.3 Area by Double Integration 1108
- 15.4 Double Integrals in Polar Form 1113
- 15.5 Triple Integrals in Rectangular Coordinates 1119
- 15.6 Moments and Centers of Mass 1125
- 15.7 Triple Integrals in Cylindrical and Spherical Coordinates 1132
- 15.8 Substitutions in Multiple Integrals 1146
 - Practice Exercises 1153
 - Additional and Advanced Exercises 1160

16 Integrals and Vector Fields 1167

- 16.1 Line Integrals 1167
- 16.2 Vector Fields and Line Integrals: Work, Circulation, and Flux 1173
- 16.3 Path Independence, Conservative Fields, and Potential Functions 1185
- 16.4 Green's Theorem in the Plane 1191
- 16.5 Surfaces and Area 1199
- 16.6 Surface Integrals 1209
- 16.7 Stokes' Theorem 1220
- 16.8 The Divergence Theorem and a Unified Theory 1227
 - Practice Exercises 1234
 - Additional and Advanced Exercises 1244

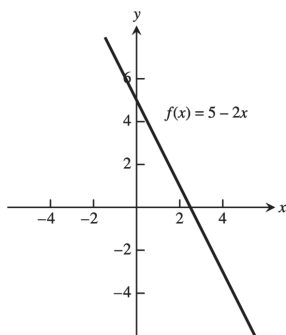
CHAPTER 1 FUNCTIONS

1.1 FUNCTIONS AND THEIR GRAPHS

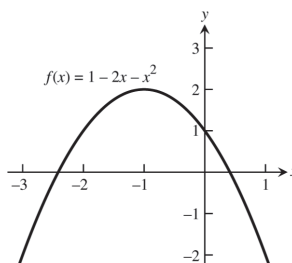
1. domain = $(-\infty, \infty)$; range = $[1, \infty)$
2. domain = $[0, \infty)$; range = $(-\infty, 1]$
3. domain = $[-2, \infty)$; y in range and $y = \sqrt{5x+10} \geq 0 \Rightarrow y$ can be any nonnegative real number \Rightarrow range = $[0, \infty)$.
4. domain = $(-\infty, 0] \cup [3, \infty)$; y in range and $y = \sqrt{x^2 - 3x} \geq 0 \Rightarrow y$ can be any nonnegative real number \Rightarrow range = $[0, \infty)$.
5. domain = $(-\infty, 3) \cup (3, \infty)$; y in range and $y = \frac{4}{3-t}$, now if $t < 3 \Rightarrow 3-t > 0 \Rightarrow \frac{4}{3-t} > 0$, or if $t > 3 \Rightarrow 3-t < 0 \Rightarrow \frac{4}{3-t} < 0 \Rightarrow y$ can be any nonzero real number \Rightarrow range = $(-\infty, 0) \cup (0, \infty)$.
6. domain = $(-\infty, -4) \cup (-4, 4) \cup (4, \infty)$; y in range and $y = \frac{2}{t^2-16}$, now if $t < -4 \Rightarrow t^2 - 16 > 0 \Rightarrow \frac{2}{t^2-16} > 0$, or if $-4 < t < 4 \Rightarrow -16 \leq t^2 - 16 < 0 \Rightarrow -\frac{2}{16} \geq \frac{2}{t^2-16}$, or if $t > 4 \Rightarrow t^2 - 16 > 0 \Rightarrow \frac{2}{t^2-16} > 0 \Rightarrow y$ can be any nonzero real number \Rightarrow range = $(-\infty, -\frac{1}{8}] \cup (0, \infty)$.
7. (a) Not the graph of a function of x since it fails the vertical line test.
(b) Is the graph of a function of x since any vertical line intersects the graph at most once.
8. (a) Not the graph of a function of x since it fails the vertical line test.
(b) Not the graph of a function of x since it fails the vertical line test.
9. base = x ; $(\text{height})^2 + \left(\frac{x}{2}\right)^2 = x^2 \Rightarrow \text{height} = \frac{\sqrt{3}}{2}x$; area is $a(x) = \frac{1}{2}(\text{base})(\text{height}) = \frac{1}{2}(x)\left(\frac{\sqrt{3}}{2}x\right) = \frac{\sqrt{3}}{4}x^2$;
perimeter is $p(x) = x + x + x = 3x$.
10. $s =$ side length $\Rightarrow s^2 + s^2 = d^2 \Rightarrow s = \frac{d}{\sqrt{2}}$; and area is $a = s^2 \Rightarrow a = \frac{1}{2}d^2$
11. Let $D =$ diagonal length of a face of the cube and $\ell =$ the length of an edge. Then $\ell^2 + D^2 = d^2$ and $D^2 = 2\ell^2 \Rightarrow 3\ell^2 = d^2 \Rightarrow \ell = \frac{d}{\sqrt{3}}$. The surface area is $6\ell^2 = \frac{6d^2}{3} = 2d^2$ and the volume is $\ell^3 = \left(\frac{d}{\sqrt{3}}\right)^3 = \frac{d^3}{3\sqrt{3}}$.
12. The coordinates of P are (x, \sqrt{x}) so the slope of the line joining P to the origin is $m = \frac{\sqrt{x}}{x} = \frac{1}{\sqrt{x}} (x > 0)$.
Thus, $(x, \sqrt{x}) = \left(\frac{1}{m^2}, \frac{1}{m}\right)$.
13. $2x + 4y = 5 \Rightarrow y = -\frac{1}{2}x + \frac{5}{4}$; $L = \sqrt{(x-0)^2 + (y-0)^2} = \sqrt{x^2 + \left(-\frac{1}{2}x + \frac{5}{4}\right)^2} = \sqrt{x^2 + \frac{1}{4}x^2 - \frac{5}{4}x + \frac{25}{16}}$
 $= \sqrt{\frac{5}{4}x^2 - \frac{5}{4}x + \frac{25}{16}} = \sqrt{\frac{20x^2 - 20x + 25}{16}} = \frac{\sqrt{20x^2 - 20x + 25}}{4}$
14. $y = \sqrt{x-3} \Rightarrow y^2 + 3 = x$; $L = \sqrt{(x-4)^2 + (y-0)^2} = \sqrt{(y^2 + 3 - 4)^2 + y^2} = \sqrt{(y^2 - 1)^2 + y^2}$
 $= \sqrt{y^4 - 2y^2 + 1 + y^2} = \sqrt{y^4 - y^2 + 1}$

2 Chapter 1 Functions

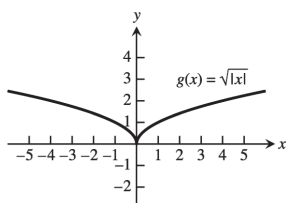
15. The domain is $(-\infty, \infty)$.



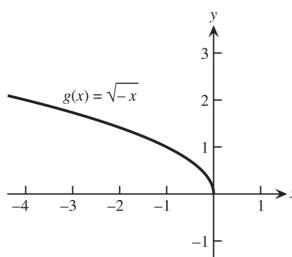
16. The domain is $(-\infty, \infty)$.



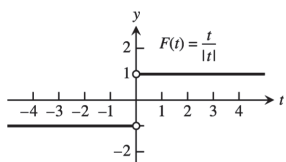
17. The domain is $(-\infty, \infty)$.



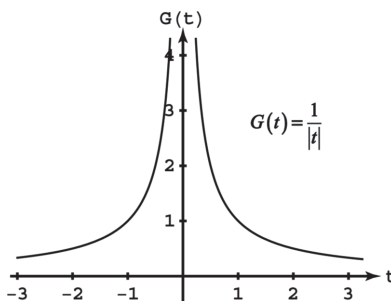
18. The domain is $(-\infty, 0]$.



19. The domain is $(-\infty, 0) \cup (0, \infty)$.



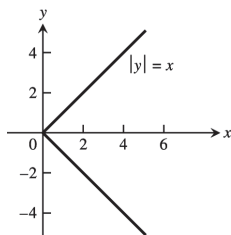
20. The domain is $(-\infty, 0) \cup (0, \infty)$.



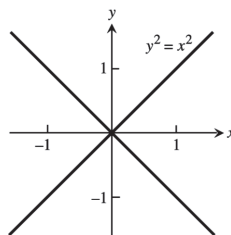
21. The domain is $(-\infty, -5) \cup (-5, -3] \cup [3, 5) \cup (5, \infty)$ 22. The range is $[2, 3)$.

23. Neither graph passes the vertical line test

(a)

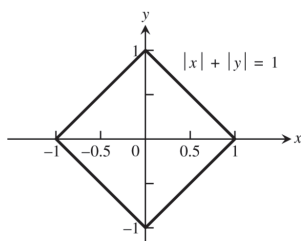


(b)

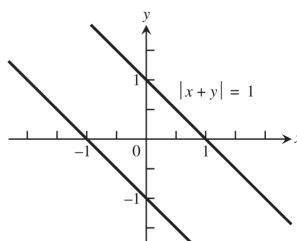


24. Neither graph passes the vertical line test

(a)



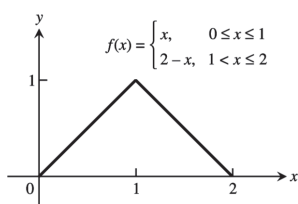
(b)



$$|x+y|=1 \Leftrightarrow \begin{cases} x+y=1 \\ \text{or} \\ x+y=-1 \end{cases} \Leftrightarrow \begin{cases} y=1-x \\ \text{or} \\ y=-1-x \end{cases}$$

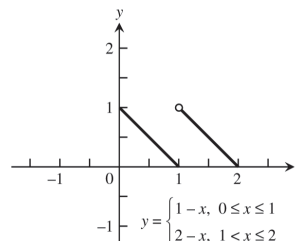
25.

x	0	1	2
y	0	1	0

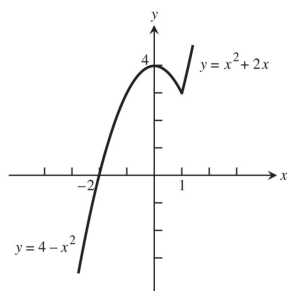


26.

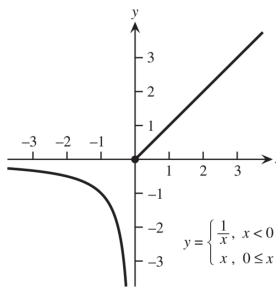
x	0	1	2
y	1	0	0



27. $F(x) = \begin{cases} 4-x^2, & x \leq 1 \\ x^2+2x, & x > 1 \end{cases}$



28. $G(x) = \begin{cases} \frac{1}{x}, & x < 0 \\ x, & 0 \leq x \end{cases}$



29. (a) Line through (0, 0) and (1, 1): $y = x$; Line through (1, 1) and (2, 0): $y = -x + 2$

$$f(x) = \begin{cases} x, & 0 \leq x \leq 1 \\ -x+2, & 1 < x \leq 2 \end{cases}$$

(b) $f(x) = \begin{cases} 2, & 0 \leq x < 1 \\ 0, & 1 \leq x < 2 \\ 2, & 2 \leq x < 3 \\ 0, & 3 \leq x \leq 4 \end{cases}$

30. (a) Line through (0, 2) and (2, 0): $y = -x + 2$

Line through (2, 1) and (5, 0): $m = \frac{0-1}{5-2} = -\frac{1}{3}$, so $y = -\frac{1}{3}(x-2) + 1 = -\frac{1}{3}x + \frac{5}{3}$

$$f(x) = \begin{cases} -x+2, & 0 < x \leq 2 \\ -\frac{1}{3}x + \frac{5}{3}, & 2 < x \leq 5 \end{cases}$$

4 Chapter 1 Functions

(b) Line through $(-1, 0)$ and $(0, -3)$: $m = \frac{-3-0}{0-(-1)} = -3$, so $y = -3x - 3$

Line through $(0, 3)$ and $(2, -1)$: $m = \frac{-1-3}{2-0} = \frac{-4}{2} = -2$, so $y = -2x + 3$

$$f(x) = \begin{cases} -3x-3, & -1 < x \leq 0 \\ -2x+3, & 0 < x \leq 2 \end{cases}$$

31. (a) Line through $(-1, 1)$ and $(0, 0)$: $y = -x$

Line through $(0, 1)$ and $(1, 1)$: $y = 1$

Line through $(1, 1)$ and $(3, 0)$: $m = \frac{0-1}{3-1} = \frac{-1}{2} = -\frac{1}{2}$, so $y = -\frac{1}{2}(x-1) + 1 = -\frac{1}{2}x + \frac{3}{2}$

$$f(x) = \begin{cases} -x & -1 \leq x < 0 \\ 1 & 0 < x \leq 1 \\ -\frac{1}{2}x + \frac{3}{2} & 1 < x < 3 \end{cases}$$

(b) Line through $(-2, -1)$ and $(0, 0)$: $y = \frac{1}{2}x$

Line through $(0, 2)$ and $(1, 0)$: $y = -2x + 2$

Line through $(1, -1)$ and $(3, -1)$: $y = -1$

$$f(x) = \begin{cases} \frac{1}{2}x & -2 \leq x \leq 0 \\ -2x+2 & 0 < x \leq 1 \\ -1 & 1 < x \leq 3 \end{cases}$$

32. (a) Line through $(\frac{T}{2}, 0)$ and $(T, 1)$: $m = \frac{1-0}{T-(T/2)} = \frac{2}{T}$, so $y = \frac{2}{T}(x - \frac{T}{2}) + 0 = \frac{2}{T}x - 1$

$$f(x) = \begin{cases} 0, & 0 \leq x \leq \frac{T}{2} \\ \frac{2}{T}x - 1, & \frac{T}{2} < x \leq T \end{cases}$$

$$(b) f(x) = \begin{cases} A, & 0 \leq x < \frac{T}{2} \\ -A, & \frac{T}{2} \leq x < T \\ A, & T \leq x < \frac{3T}{2} \\ -A, & \frac{3T}{2} \leq x \leq 2T \end{cases}$$

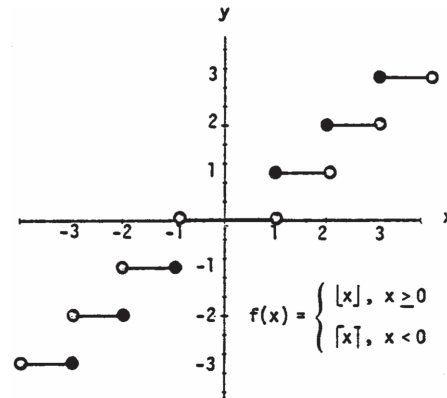
33. (a) $\lfloor x \rfloor = 0$ for $x \in [0, 1)$

(b) $\lceil x \rceil = 0$ for $x \in (-1, 0]$

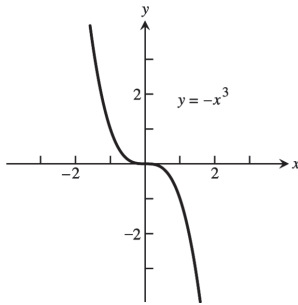
34. $\lfloor x \rfloor = \lceil x \rceil$ only when x is an integer.

35. For any real number x , $n \leq x \leq n+1$, where n is an integer. Now: $n \leq x \leq n+1 \Rightarrow -(n+1) \leq -x \leq -n$.
By definition: $\lceil -x \rceil = -n$ and $\lfloor x \rfloor = n \Rightarrow -\lfloor x \rfloor = -n$. So $\lceil -x \rceil = -\lfloor x \rfloor$ for all real x .

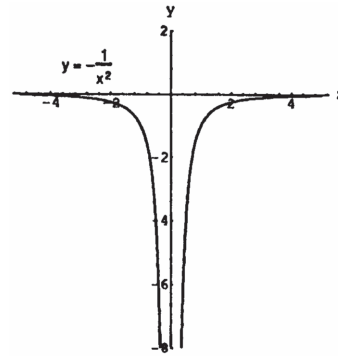
36. To find $f(x)$ you delete the decimal or fractional portion of x , leaving only the integer part.



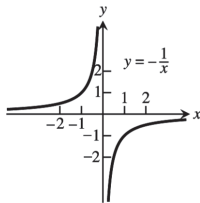
37. Symmetric about the origin
Dec: $-\infty < x < \infty$
Inc: nowhere



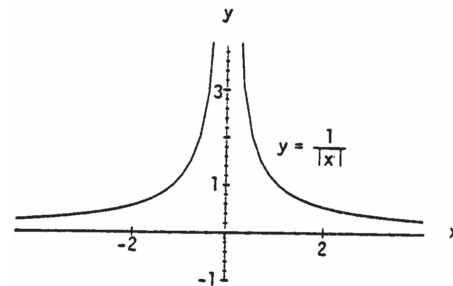
38. Symmetric about the y-axis
Dec: $-\infty < x < 0$
Inc: $0 < x < \infty$



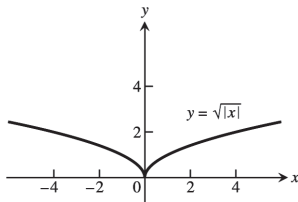
39. Symmetric about the origin
Dec: nowhere
Inc: $-\infty < x < 0$
 $0 < x < \infty$



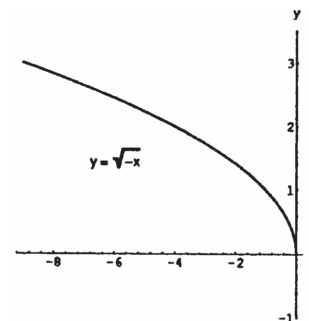
40. Symmetric about the y-axis
Dec: $0 < x < \infty$
Inc: $-\infty < x < 0$



41. Symmetric about the y-axis
Dec: $-\infty < x \leq 0$
Inc: $0 \leq x < \infty$

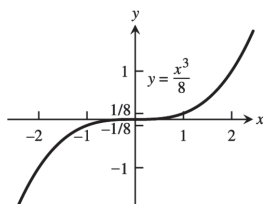


42. No symmetry
Dec: $-\infty < x \leq 0$
Inc: nowhere

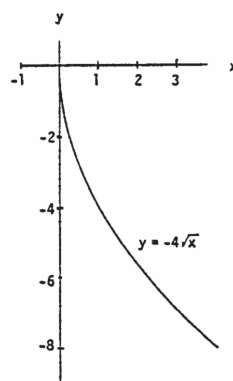


6 Chapter 1 Functions

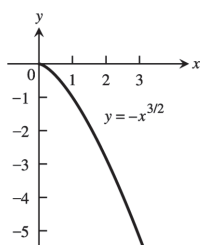
43. Symmetric about the origin
Dec: nowhere
Inc: $-\infty < x < \infty$



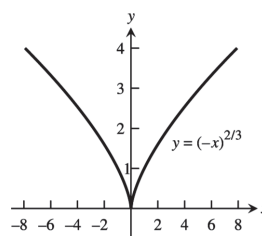
44. No symmetry
Dec: $0 \leq x < \infty$
Inc: nowhere



45. No symmetry
Dec: $0 \leq x < \infty$
Inc: nowhere



46. Symmetric about the y-axis
Dec: $-\infty < x \leq 0$
Inc: $0 \leq x < \infty$



47. Since a horizontal line not through the origin is symmetric with respect to the y-axis, but not with respect to the origin, the function is even.

48. $f(x) = x^{-5} = \frac{1}{x^5}$ and $f(-x) = (-x)^{-5} = \frac{1}{(-x)^5} = -\left(\frac{1}{x^5}\right) = -f(x)$. Thus the function is odd.

49. Since $f(x) = x^2 + 1 = (-x)^2 + 1 = f(-x)$. The function is even.

50. Since $[f(x) = x^2 + x] \neq [f(-x) = (-x)^2 - x]$ and $[f(x) = x^2 + x] \neq [-f(x) = -(x)^2 - x]$ the function is neither even nor odd.

51. Since $g(x) = x^3 + x$, $g(-x) = -x^3 - x = -(x^3 + x) = -g(x)$. So the function is odd.

52. $g(x) = x^4 + 3x^2 - 1 = (-x)^4 + 3(-x)^2 - 1 = g(-x)$, thus the function is even.

53. $g(x) = \frac{1}{x^2 - 1} = \frac{1}{(-x)^2 - 1} = g(-x)$. Thus the function is even.

54. $g(x) = \frac{x}{x^2 - 1}$; $g(-x) = -\frac{x}{x^2 - 1} = -g(x)$. So the function is odd.

55. $h(t) = \frac{1}{t - 1}$; $h(-t) = \frac{1}{-t - 1}$; $-h(t) = \frac{1}{1 - t}$. Since $h(t) \neq -h(t)$ and $h(t) \neq h(-t)$, the function is neither even nor odd.

56. Since $|t^3| = |(-t)^3|$, $h(t) = h(-t)$ and the function is even.
57. $h(t) = 2t + 1$, $h(-t) = -2t + 1$. So $h(t) \neq h(-t)$. $-h(t) = -2t - 1$, so $h(t) \neq -h(t)$. The function is neither even nor odd.
58. $h(t) = 2|t| + 1$ and $h(-t) = 2|-t| + 1 = 2|t| + 1$. So $h(t) = h(-t)$ and the function is even.
59. $g(x) = \sin 2x$; $g(-x) = -\sin 2x = -g(x)$. So the function is odd.
60. $g(x) = \sin x^2$; $g(-x) = \sin x^2 = g(x)$. So the function is even.
61. $g(x) = \cos 3x$; $g(-x) = \cos 3x = g(x)$. So the function is even.
62. $g(x) = 1 + \cos x$; $g(-x) = 1 + \cos x = g(x)$. So the function is even.
63. $s = kt \Rightarrow 25 = k(75) \Rightarrow k = \frac{1}{3} \Rightarrow s = \frac{1}{3}t$; $60 = \frac{1}{3}t \Rightarrow t = 180$
64. $K = cv^2 \Rightarrow 12960 = c(18)^2 \Rightarrow c = 40 \Rightarrow K = 40v^2$; $K = 40(10)^2 = 4000$ joules
65. $r = \frac{k}{s} \Rightarrow 6 = \frac{k}{4} \Rightarrow k = 24 \Rightarrow r = \frac{24}{s}$; $10 = \frac{24}{s} \Rightarrow s = \frac{12}{5}$
66. $P = \frac{k}{V} \Rightarrow 14.7 = \frac{k}{1000} \Rightarrow k = 14700 \Rightarrow P = \frac{14700}{V}$; $23.4 = \frac{14700}{V} \Rightarrow V = \frac{24500}{39} \approx 628.2 \text{ in}^3$
67. $V = f(x) = x(14 - 2x)(22 - 2x) = 4x^3 - 72x^2 + 308x$; $0 < x < 7$.
68. (a) Let h = height of the triangle. Since the triangle is isosceles, $(\overline{AB})^2 + (\overline{AB})^2 = 2^2 \Rightarrow \overline{AB} = \sqrt{2}$. So,
 $h^2 + 1^2 = (\sqrt{2})^2 \Rightarrow h = 1 \Rightarrow B$ is at $(0, 1) \Rightarrow$ slope of $AB = -1 \Rightarrow$ The equation of AB is
 $y = f(x) = -x + 1$; $x \in [0, 1]$.
- (b) $A(x) = 2xy = 2x(-x + 1) = -2x^2 + 2x$; $x \in [0, 1]$.
69. (a) Graph h because it is an even function and rises less rapidly than does Graph g .
 (b) Graph f because it is an odd function.
 (c) Graph g because it is an even function and rises more rapidly than does Graph h .
70. (a) Graph f because it is linear.
 (b) Graph g because it contains $(0, 1)$.
 (c) Graph h because it is a nonlinear odd function.

71. (a) From the graph, $\frac{x}{2} > 1 + \frac{4}{x} \Rightarrow x \in (-2, 0) \cup (4, \infty)$

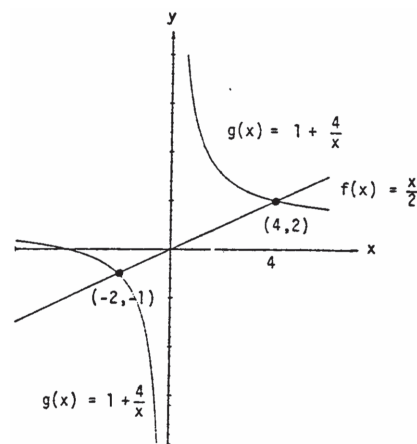
(b) $\frac{x}{2} > 1 + \frac{4}{x} \Rightarrow \frac{x}{2} - 1 - \frac{4}{x} > 0$

$x > 0: \frac{x}{2} - 1 - \frac{4}{x} > 0 \Rightarrow \frac{x^2 - 2x - 8}{2x} > 0 \Rightarrow \frac{(x-4)(x+2)}{2x} > 0$
 $\Rightarrow x > 4$ since x is positive;

$x < 0: \frac{x}{2} - 1 - \frac{4}{x} > 0 \Rightarrow \frac{x^2 - 2x - 8}{2x} < 0 \Rightarrow \frac{(x-4)(x+2)}{2x} < 0$
 $\Rightarrow x < -2$ since x is negative;
 sign of $(x-4)(x+2)$



Solution interval: $(-2, 0) \cup (4, \infty)$



72. (a) From the graph, $\frac{3}{x-1} < \frac{2}{x+1} \Rightarrow x \in (-\infty, -5) \cup (-1, 1)$

(b) Case $x < -1: \frac{3}{x-1} < \frac{2}{x+1} \Rightarrow \frac{3(x+1)}{x-1} > 2$

$\Rightarrow 3x+3 < 2x-2 \Rightarrow x < -5.$

Thus, $x \in (-\infty, -5)$ solves the inequality.

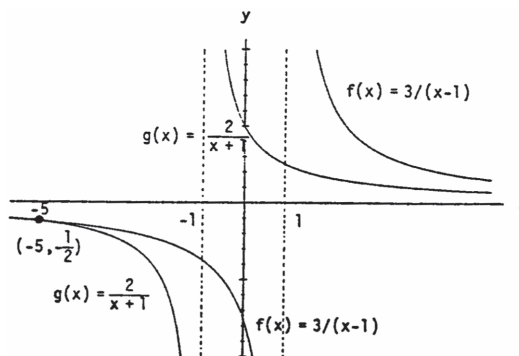
Case $-1 < x < 1: \frac{3}{x-1} < \frac{2}{x+1} \Rightarrow \frac{3(x+1)}{x-1} < 2$

$\Rightarrow 3x+3 > 2x-2 \Rightarrow x > -5$ which is true if $x > -1$. Thus, $x \in (-1, 1)$ solves the inequality.

Case $1 < x: \frac{3}{x-1} < \frac{2}{x+1} \Rightarrow 3x+3 < 2x-2 \Rightarrow x < -5$

which is never true if $1 < x$, so no solution here.

In conclusion, $x \in (-\infty, -5) \cup (-1, 1)$.



73. A curve symmetric about the x -axis will not pass the vertical line test because the points (x, y) and $(x, -y)$ lie on the same vertical line. The graph of the function $y = f(x) = 0$ is the x -axis, a horizontal line for which there is a single y -value, 0, for any x .

74. price = $40 + 5x$, quantity = $300 - 25x \Rightarrow R(x) = (40 + 5x)(300 - 25x)$

75. $x^2 + x^2 = h^2 \Rightarrow x = \frac{h}{\sqrt{2}} = \frac{\sqrt{2}h}{2}$; cost = $5(2x) + 10h \Rightarrow C(h) = 10\left(\frac{\sqrt{2}h}{2}\right) + 10h = 5h(\sqrt{2} + 2)$

76. (a) Note that 2 mi = 10,560 ft, so there are $\sqrt{800^2 + x^2}$ feet of river cable at \$180 per foot and $(10,560 - x)$ feet of land cable at \$100 per foot. The cost is $C(x) = 180\sqrt{800^2 + x^2} + 100(10,560 - x)$.

(b) $C(0) = \$1,200,000$

$C(500) \approx \$1,175,812$

$C(1000) \approx \$1,186,512$

$C(1500) \approx \$1,212,000$

$C(2000) \approx \$1,243,732$

$C(2500) \approx \$1,278,479$

$C(3000) \approx \$1,314,870$

Values beyond this are all larger. It would appear that the least expensive location is less than 2000 feet from the point P .

1.2 COMBINING FUNCTIONS; SHIFTING AND SCALING GRAPHS

1. $D_f: -\infty < x < \infty, D_g: x \geq 1 \Rightarrow D_{f+g} = D_{fg}: x \geq 1. R_f: -\infty < y < \infty, R_g: y \geq 0, R_{f+g}: y \geq 1, R_{fg}: y \geq 0$
2. $D_f: x+1 \geq 0 \Rightarrow x \geq -1, D_g: x-1 \geq 0 \Rightarrow x \geq 1. \text{ Therefore } D_{f+g} = D_{fg}: x \geq 1.$
 $R_f = R_g: y \geq 0, R_{f+g}: y \geq \sqrt{2}, R_{fg}: y \geq 0$
3. $D_f: -\infty < x < \infty, D_g: -\infty < x < \infty, D_{f/g}: -\infty < x < \infty, D_{g/f}: -\infty < x < \infty, R_f: y = 2, R_g: y \geq 1, R_{f/g}: 0 < y \leq 2,$
 $R_{g/f}: \frac{1}{2} \leq y < \infty$
4. $D_f: -\infty < x < \infty, D_g: x \geq 0, D_{f/g}: x \geq 0, D_{g/f}: x \geq 0; R_f: y = 1, R_g: y \geq 1, R_{f/g}: 0 < y \leq 1, R_{g/f}: 1 \leq y < \infty$
5. (a) 2 (b) 22 (c) $x^2 + 2$
 (d) $(x+5)^2 - 3 = x^2 + 10x + 22$ (e) 5 (f) -2
 (g) $x+10$ (h) $(x^2 - 3)^2 - 3 = x^4 - 6x^2 + 6$
6. (a) $-\frac{1}{3}$ (b) 2 (c) $\frac{1}{x+1} - 1 = \frac{-x}{x+1}$
 (d) $\frac{1}{x}$ (e) 0 (f) $\frac{3}{4}$
 (g) $x-2$ (h) $\frac{1}{\frac{1}{x+1} + 1} = \frac{1}{\frac{x+2}{x+1}} = \frac{x+1}{x+2}$
7. $(f \circ g \circ h)(x) = f(g(h(x))) = f(g(4-x)) = f(3(4-x)) = f(12-3x) = (12-3x) + 1 = 13-3x$
8. $(f \circ g \circ h)(x) = f(g(h(x))) = f(g(x^2)) = f(2(x^2)-1) = f(2x^2-1) = 3(2x^2-1) + 4 = 6x^2 + 1$
9. $(f \circ g \circ h)(x) = f(g(h(x))) = f\left(g\left(\frac{1}{x}\right)\right) = f\left(\frac{1}{\frac{1}{x} + 4}\right) = f\left(\frac{x}{1+4x}\right) = \sqrt{\frac{x}{1+4x} + 1} = \sqrt{\frac{5x+1}{1+4x}}$
10. $(f \circ g \circ h)(x) = f(g(h(x))) = f\left(g\left(\sqrt{2-x}\right)\right) = f\left(\frac{(\sqrt{2-x})^2}{(\sqrt{2-x})^2 + 1}\right) = f\left(\frac{2-x}{3-x}\right) = \frac{\frac{2-x}{3-x} + 2}{3 - \frac{2-x}{3-x}} = \frac{8-3x}{7-2x}$
11. (a) $(f \circ g)(x)$ (b) $(j \circ g)(x)$ (c) $(g \circ g)(x)$
 (d) $(j \circ j)(x)$ (e) $(g \circ h \circ f)(x)$ (f) $(h \circ j \circ f)(x)$
12. (a) $(f \circ j)(x)$ (b) $(g \circ h)(x)$ (c) $(h \circ h)(x)$
 (d) $(f \circ f)(x)$ (e) $(j \circ g \circ f)(x)$ (f) $(g \circ f \circ h)(x)$
13.

g(x)	f(x)	(f ∘ g)(x)
(a) $x-7$	\sqrt{x}	$\sqrt{x-7}$
(b) $x+2$	$3x$	$3(x+2) = 3x+6$
(c) x^2	$\sqrt{x-5}$	$\sqrt{x^2-5}$
(d) $\frac{x}{x-1}$	$\frac{x}{x-1}$	$\frac{\frac{x}{x-1}}{\frac{x}{x-1} - 1} = \frac{x}{x - (x-1)} = x$
(e) $\frac{1}{x-1}$	$1 + \frac{1}{x}$	x

(f) $\frac{1}{x} \quad \frac{1}{x} \quad x$

14. (a) $(f \circ g)(x) = |g(x)| = \frac{1}{|x-1|}$.

(b) $(f \circ g)(x) = \frac{g(x)-1}{g(x)} = \frac{x}{x+1} \Rightarrow 1 - \frac{1}{g(x)} = \frac{x}{x+1} \Rightarrow 1 - \frac{x}{x+1} = \frac{1}{g(x)} \Rightarrow \frac{1}{x+1} = \frac{1}{g(x)}$, so $g(x) = x+1$.

(c) Since $(f \circ g)(x) = \sqrt{g(x)} = |x|$, $g(x) = x^2$.

(d) Since $(f \circ g)(x) = f(\sqrt{x}) = |x|$, $f(x) = x^2$. (Note that the domain of the composite is $[0, \infty)$.)

The completed table is shown. Note that the absolute value sign in part (d) is optional.

$g(x)$	$f(x)$	$(f \circ g)(x)$
$\frac{1}{x-1}$	$ x $	$\frac{1}{ x-1 }$
$x+1$	$\frac{x-1}{x}$	$\frac{x}{x+1}$
x^2	\sqrt{x}	$ x $
\sqrt{x}	x^2	$ x $

15. (a) $f(g(-1)) = f(1) = 1$ (b) $g(f(0)) = g(-2) = 2$ (c) $f(f(-1)) = f(0) = -2$

(d) $g(g(2)) = g(0) = 0$ (e) $g(f(-2)) = g(1) = -1$ (f) $f(g(1)) = f(-1) = 0$

16. (a) $f(g(0)) = f(-1) = 2 - (-1) = 3$, where $g(0) = 0 - 1 = -1$

(b) $g(f(3)) = g(-1) = -(-1) = 1$, where $f(3) = 2 - 3 = -1$

(c) $g(g(-1)) = g(1) = 1 - 1 = 0$, where $g(-1) = -(-1) = 1$

(d) $f(f(2)) = f(0) = 2 - 0 = 2$, where $f(2) = 2 - 2 = 0$

(e) $g(f(0)) = g(2) = 2 - 1 = 1$, where $f(0) = 2 - 0 = 2$

(f) $f\left(g\left(\frac{1}{2}\right)\right) = f\left(-\frac{1}{2}\right) = 2 - \left(-\frac{1}{2}\right) = \frac{5}{2}$, where $g\left(\frac{1}{2}\right) = \frac{1}{2} - 1 = -\frac{1}{2}$

17. (a) $(f \circ g)(x) = f(g(x)) = \sqrt{\frac{1}{x} + 1} = \sqrt{\frac{1+x}{x}}$

$(g \circ f)(x) = g(f(x)) = \frac{1}{\sqrt{x+1}}$

(b) Domain $(f \circ g)$: $(-\infty, -1] \cup (0, \infty)$, domain $(g \circ f)$: $(-1, \infty)$

(c) Range $(f \circ g)$: $(1, \infty)$, range $(g \circ f)$: $(0, \infty)$

18. (a) $(f \circ g)(x) = f(g(x)) = 1 - 2\sqrt{x} + x$

$(g \circ f)(x) = g(f(x)) = 1 - |x|$

(b) Domain $(f \circ g)$: $[0, \infty)$, domain $(g \circ f)$: $(-\infty, \infty)$

(c) Range $(f \circ g)$: $(0, \infty)$, range $(g \circ f)$: $(-\infty, 1]$

19. $(f \circ g)(x) = x \Rightarrow f(g(x)) = x \Rightarrow \frac{g(x)}{g(x)-2} = x \Rightarrow g(x) = (g(x)-2)x = x \cdot g(x) - 2x$
 $\Rightarrow g(x) - x \cdot g(x) = -2x \Rightarrow g(x) = -\frac{2x}{1-x} = \frac{2x}{x-1}$

20. $(f \circ g)(x) = x+2 \Rightarrow f(g(x)) = x+2 \Rightarrow 2(g(x))^3 - 4 = x+2 \Rightarrow (g(x))^3 = \frac{x+6}{2} \Rightarrow g(x) = \sqrt[3]{\frac{x+6}{2}}$

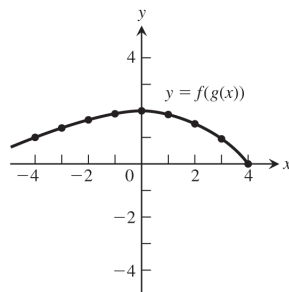
21. $V = V(s) = V(s(t)) = V(2t-3)$

$= (2t-3)^2 + 2(2t-3) + 3$

$= 4t^2 - 8t + 6$

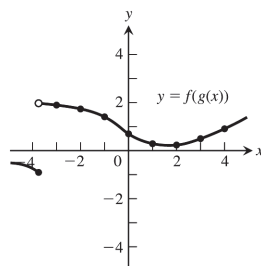
22. (a)

x	-4	-3	-2	-1	0	1	2	3	4
$g(x)$	-2	-1	-0.5	-0.2	0	0.2	0.5	1	2
$f(g(x))$	1	1.3	1.6	1.8	2	1.8	1.5	1	0



(b)

x	-4	-3	-2	-1	0	1	2	3	4
$g(x)$	1.5	0.3	-0.7	-1.5	-2.4	-2.8	-3	-2.7	-2
$f(g(x))$	-0.8	1.9	1.7	1.5	0.7	0.3	0.2	0.5	0.9



23. (a) $y = -(x + 7)^2$

(b) $y = -(x - 4)^2$

24. (a) $y = x^2 + 3$

(b) $y = x^2 - 5$

25. (a) Position 4

(b) Position 1

(c) Position 2

(d) Position 3

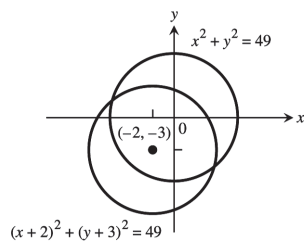
26. (a) $y = -(x - 1)^2 + 4$

(b) $y = -(x + 2)^2 + 3$

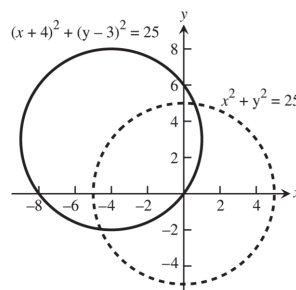
(c) $y = -(x + 4)^2 - 1$

(d) $y = -(x - 2)^2$

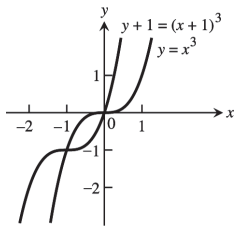
27.



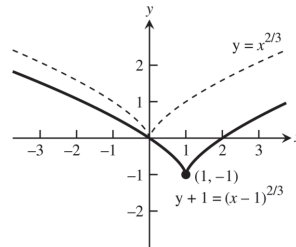
28.



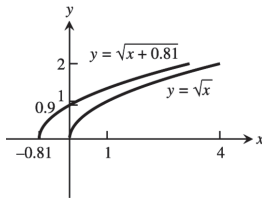
29.



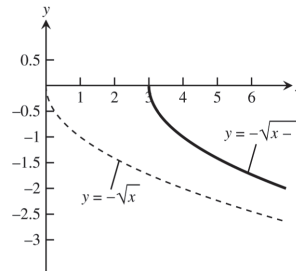
30.



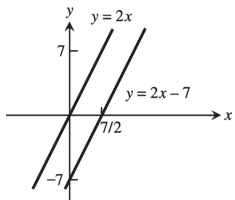
31.



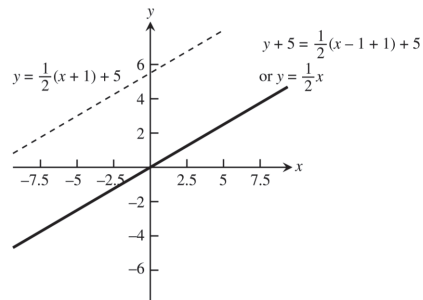
32.



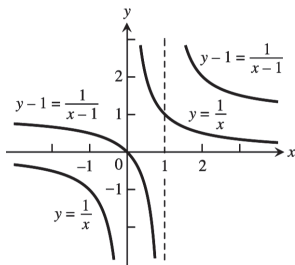
33.



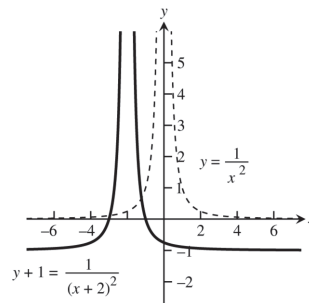
34.



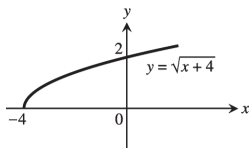
35.



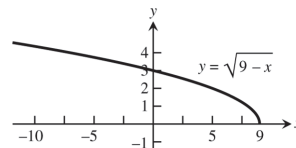
36.



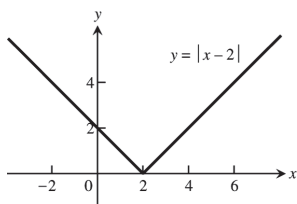
37.



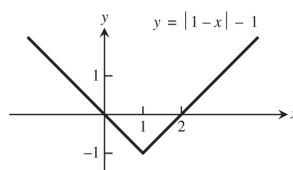
38.



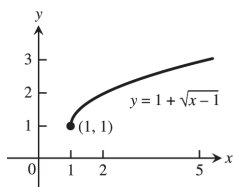
39.



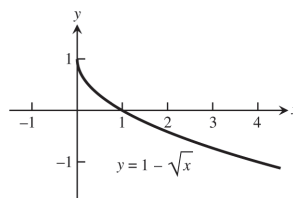
40.



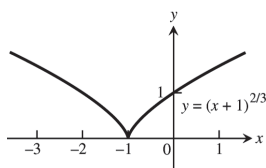
41.



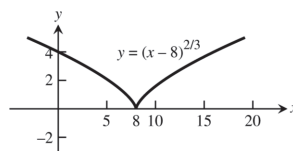
42.



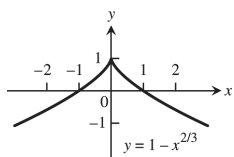
43.



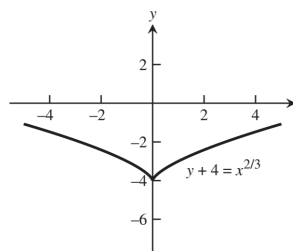
44.



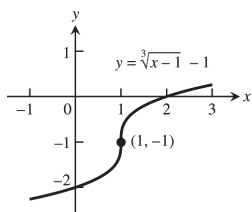
45.



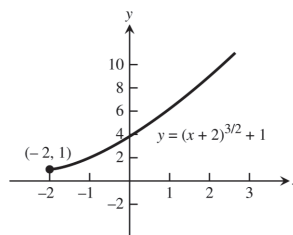
46.



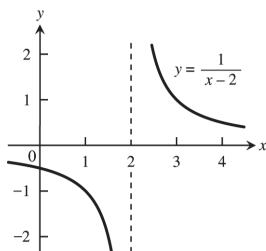
47.



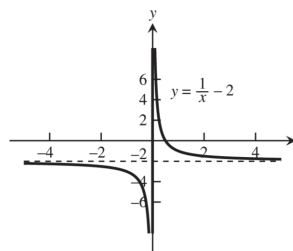
48.



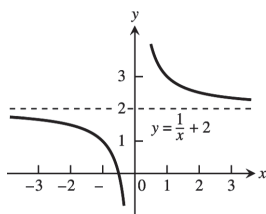
49.



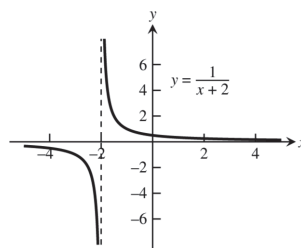
50.



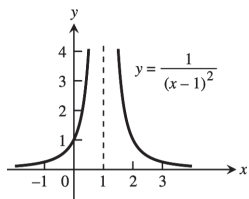
51.



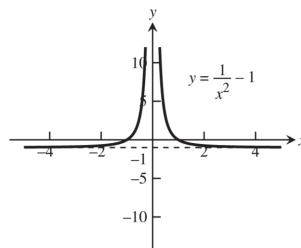
52.



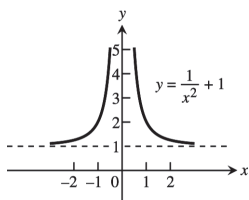
53.



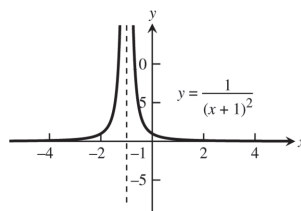
54.



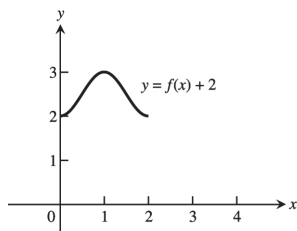
55.



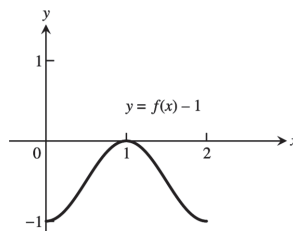
56.



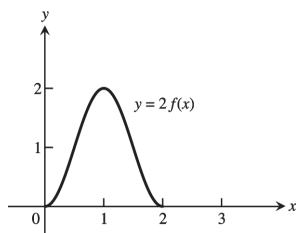
57. (a) domain: $[0, 2]$; range: $[2, 3]$



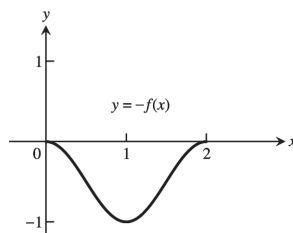
(b) domain: $[0, 2]$; range: $[-1, 0]$



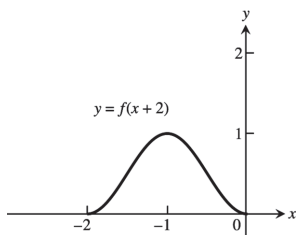
(c) domain: $[0, 2]$; range: $[0, 2]$



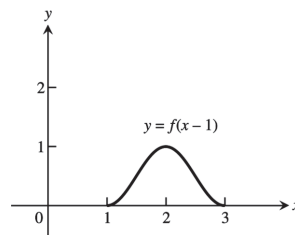
(d) domain: $[0, 2]$; range: $[-1, 0]$



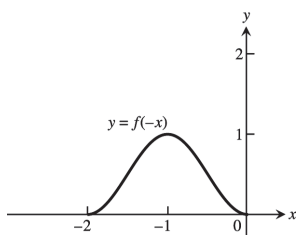
(e) domain: $[-2, 0]$; range: $[0, 1]$



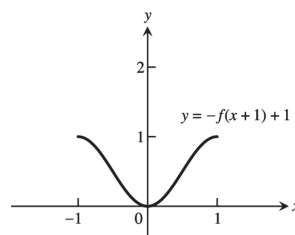
(f) domain: $[1, 3]$; range: $[0, 1]$



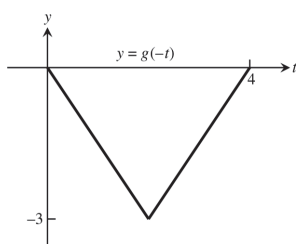
(g) domain: $[-2, 0]$; range: $[0, 1]$



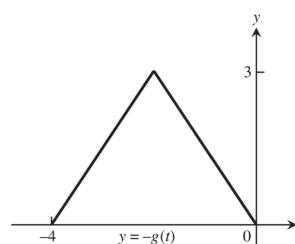
(h) domain: $[-1, 1]$; range: $[0, 1]$



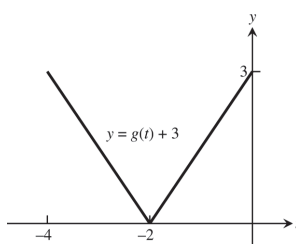
58. (a) domain: $[0, 4]$; range: $[-3, 0]$



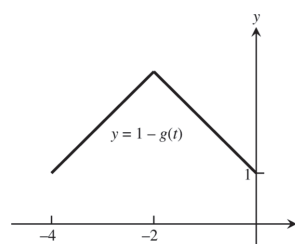
(b) domain: $[-4, 0]$; range: $[0, 3]$



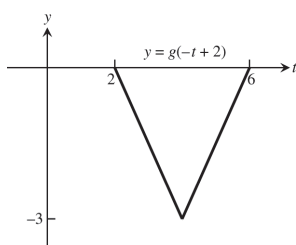
(c) domain: $[-4, 0]$; range: $[0, 3]$



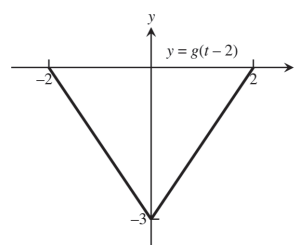
(d) domain: $[-4, 0]$; range: $[1, 4]$



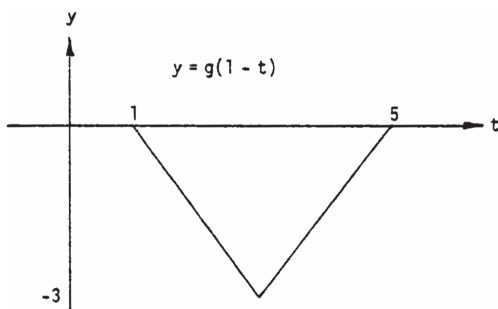
(e) domain: $[2, 4]$; range: $[-3, 0]$



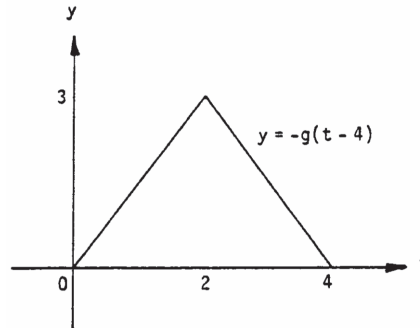
(f) domain: $[-2, 2]$; range: $[-3, 0]$



(g) domain: $[1, 5]$; range: $[-3, 0]$



(h) domain: $[0, 4]$; range: $[0, 3]$



59. $y = 3x^2 - 3$

60. $y = (2x)^2 - 1 = 4x^2 - 1$

61. $y = \frac{1}{2}\left(1 + \frac{1}{x^2}\right) = \frac{1}{2} + \frac{1}{2x^2}$

62. $y = 1 + \frac{1}{(x/3)^2} = 1 + \frac{9}{x^2}$

63. $y = \sqrt{4x+1}$

64. $y = 3\sqrt{x+1}$

65. $y = \sqrt{4 - \left(\frac{x}{2}\right)^2} = \frac{1}{2}\sqrt{16 - x^2}$

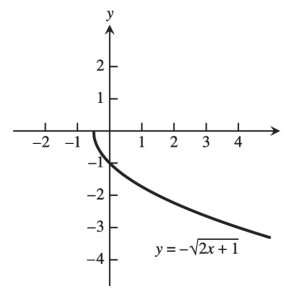
66. $y = \frac{1}{3}\sqrt{4 - x^2}$

67. $y = 1 - (3x)^3 = 1 - 27x^3$

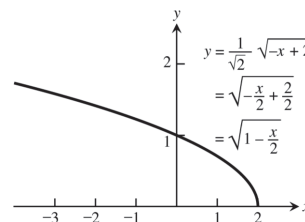
68. $y = 1 - \left(\frac{x}{2}\right)^3 = 1 - \frac{x^3}{8}$

69. Let $y = -\sqrt{2x+1} = f(x)$ and let $g(x) = x^{1/2}$,
 $h(x) = \left(x + \frac{1}{2}\right)^{1/2}$, $i(x) = \sqrt{2}\left(x + \frac{1}{2}\right)^{1/2}$, and
 $j(x) = -\left[\sqrt{2}\left(x + \frac{1}{2}\right)^{1/2}\right] = f(x)$. The graph of $h(x)$

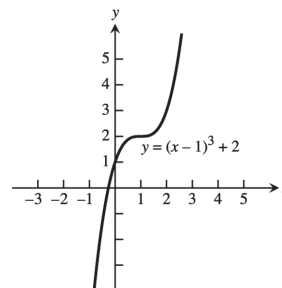
is the graph of $g(x)$ shifted left $\frac{1}{2}$ unit; the graph of $i(x)$ is the graph of $h(x)$ stretched vertically by a factor of $\sqrt{2}$; and the graph of $j(x) = f(x)$ is the graph of $i(x)$ reflected across the x -axis.



70. Let $y = \sqrt{1 - \frac{x}{2}} = f(x)$. Let $g(x) = (-x)^{1/2}$,
 $h(x) = (-x+2)^{1/2}$, and $i(x) = \frac{1}{\sqrt{2}}(-x+2)^{1/2} =$
 $\sqrt{1 - \frac{x}{2}} = f(x)$. The graph of $g(x)$ is the graph of $y = \sqrt{x}$ reflected across the x -axis. The graph of $h(x)$ is the graph of $g(x)$ shifted right two units. And the graph of $i(x)$ is the graph of $h(x)$ compressed vertically by a factor of $\sqrt{2}$.

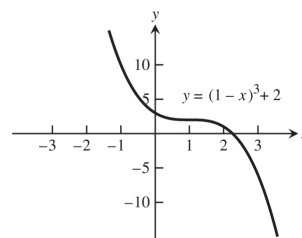


71. $y = f(x) = x^3$. Shift $f(x)$ one unit right followed by a shift two units up to get $g(x) = (x-1)^3 + 2$.

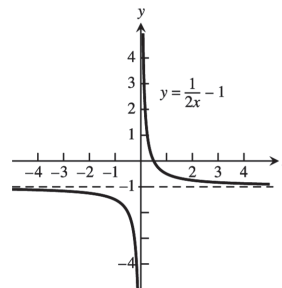


72. $y = (1-x)^3 + 2 = -[(x-1)^3 + (-2)] = f(x)$.

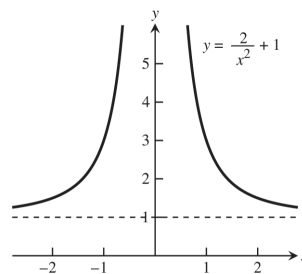
Let $g(x) = x^3$, $h(x) = (x-1)^3$, $i(x) = (x-1)^3 + (-2)$, and $j(x) = -[(x-1)^3 + (-2)]$. The graph of $h(x)$ is the graph of $g(x)$ shifted right one unit; the graph of $i(x)$ is the graph of $h(x)$ shifted down two units; and the graph of $f(x)$ is the graph of $i(x)$ reflected across the x -axis.



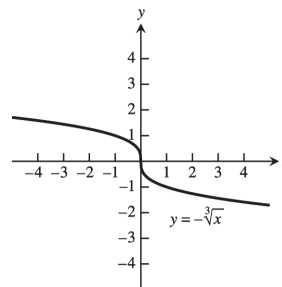
73. Compress the graph of $f(x) = \frac{1}{x}$ horizontally by a factor of 2 to get $g(x) = \frac{1}{2x}$. Then shift $g(x)$ vertically down 1 unit to get $h(x) = \frac{1}{2x} - 1$.



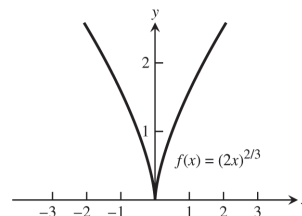
74. Let $f(x) = \frac{1}{x^2}$ and $g(x) = \frac{2}{x^2} + 1 = \frac{1}{\left(\frac{x}{\sqrt{2}}\right)^2} + 1$
 $= \frac{1}{\left(\frac{x}{\sqrt{2}}\right)^2} + 1 = \frac{1}{\left[\left(\frac{1}{\sqrt{2}}\right)x\right]^2} + 1$. Since $\sqrt{2} \approx 1.4$, we see that the graph of $f(x)$ stretched horizontally by a factor of 1.4 and shifted up 1 unit is the graph of $g(x)$.



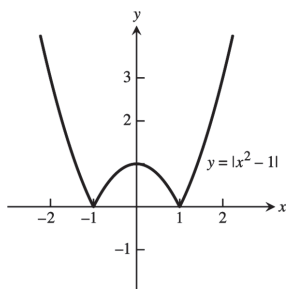
75. Reflect the graph of $y = f(x) = \sqrt[3]{x}$ across the x -axis to get $g(x) = -\sqrt[3]{x}$.



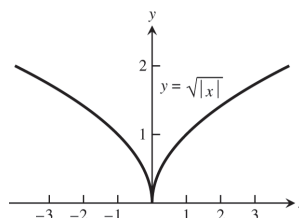
76. $y = f(x) = (-2x)^{2/3} = [(-1)(2x)]^{2/3} = (-1)^{2/3} (2x)^{2/3} = (2x)^{2/3}$. So the graph of $f(x)$ is the graph of $g(x) = x^{2/3}$ compressed horizontally by a factor of 2.



77.



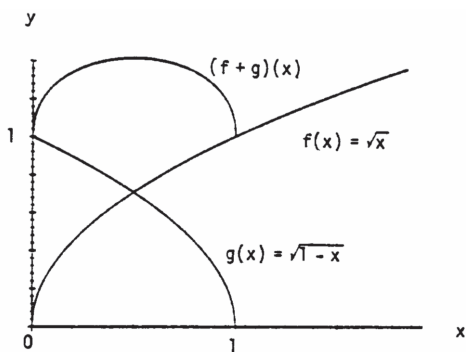
78.



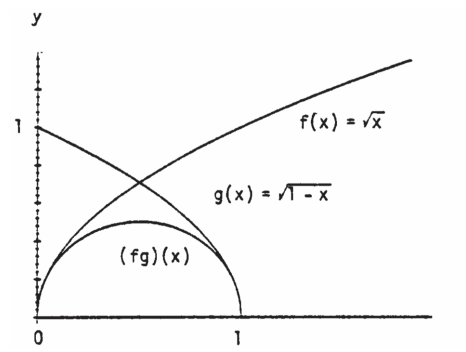
79. (a) $(fg)(-x) = f(-x)g(-x) = f(x)(-g(x)) = -(fg)(x)$, odd
 (b) $\left(\frac{f}{g}\right)(-x) = \frac{f(-x)}{g(-x)} = \frac{f(x)}{-g(x)} = -\left(\frac{f}{g}\right)(x)$, odd
 (c) $\left(\frac{g}{f}\right)(-x) = \frac{g(-x)}{f(-x)} = \frac{-g(x)}{f(x)} = -\left(\frac{g}{f}\right)(x)$, odd
 (d) $f^2(-x) = f(-x)f(-x) = f(x)f(x) = f^2(x)$, even
 (e) $g^2(-x) = (g(-x))^2 = (-g(x))^2 = g^2(x)$, even
 (f) $(f \circ g)(-x) = f(g(-x)) = f(-g(x)) = f(g(x)) = (f \circ g)(x)$, even
 (g) $(g \circ f)(-x) = g(f(-x)) = g(f(x)) = (g \circ f)(x)$, even
 (h) $(f \circ f)(-x) = f(f(-x)) = f(f(x)) = (f \circ f)(x)$, even
 (i) $(g \circ g)(-x) = g(g(-x)) = g(-g(x)) = -g(g(x)) = -(g \circ g)(x)$, odd

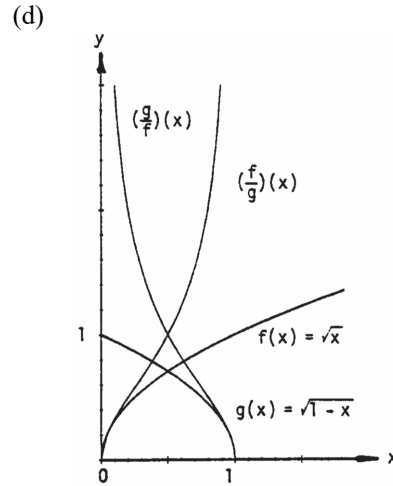
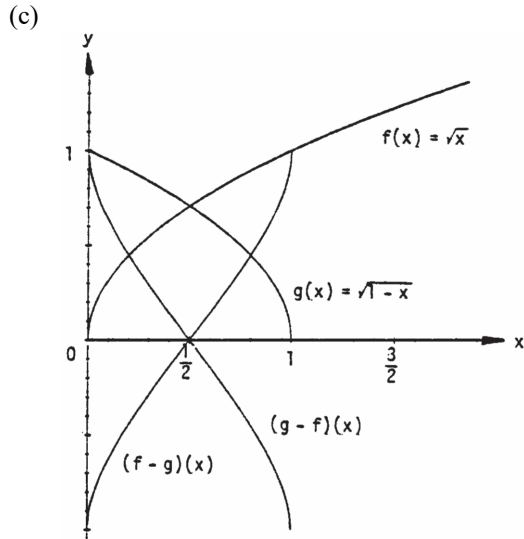
80. Yes, $f(x) = 0$ is both even and odd since $f(-x) = 0 = f(x)$ and $f(-x) = 0 = -f(x)$.

81. (a)

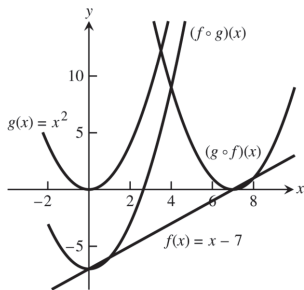


(b)





82.



1.3 TRIGONOMETRIC FUNCTIONS

- (a) $s = r\theta = (10)\left(\frac{4\pi}{5}\right) = 8\pi$ m (b) $s = r\theta = (10)(110^\circ)\left(\frac{\pi}{180^\circ}\right) = \frac{110\pi}{18} = \frac{55\pi}{9}$ m
- $\theta = \frac{s}{r} = \frac{10\pi}{8} = \frac{5\pi}{4}$ radians and $\frac{5\pi}{4}\left(\frac{180^\circ}{\pi}\right) = 225^\circ$
- $\theta = 80^\circ \Rightarrow \theta = 80^\circ\left(\frac{\pi}{180^\circ}\right) = \frac{4\pi}{9} \Rightarrow s = (6)\left(\frac{4\pi}{9}\right) = 8.4$ in. (since the diameter = 12 in. \Rightarrow radius = 6 in.)
- $d = 1$ meter $\Rightarrow r = 50$ cm $\Rightarrow \theta = \frac{s}{r} = \frac{30}{50} = 0.6$ rad or $0.6\left(\frac{180^\circ}{\pi}\right) \approx 34^\circ$

5.

θ	$-\pi$	$-\frac{2\pi}{3}$	0	$\frac{\pi}{2}$	$\frac{3\pi}{4}$
$\sin \theta$	0	$-\frac{\sqrt{3}}{2}$	0	1	$\frac{1}{\sqrt{2}}$
$\cos \theta$	-1	$-\frac{1}{2}$	1	0	$-\frac{1}{\sqrt{2}}$
$\tan \theta$	0	$\sqrt{3}$	0	und.	-1
$\cot \theta$	und.	$\frac{1}{\sqrt{3}}$	und.	0	-1
$\sec \theta$	-1	-2	1	und.	$-\sqrt{2}$
$\csc \theta$	und.	$-\frac{2}{\sqrt{3}}$	und.	1	$\sqrt{2}$

6.

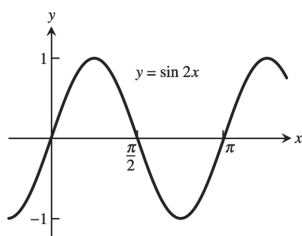
θ	$-\frac{3\pi}{2}$	$-\frac{\pi}{3}$	$-\frac{\pi}{6}$	$\frac{\pi}{4}$	$\frac{5\pi}{6}$
$\sin \theta$	1	$-\frac{\sqrt{3}}{2}$	$-\frac{1}{2}$	$\frac{1}{\sqrt{2}}$	$\frac{1}{2}$
$\cos \theta$	0	$\frac{1}{2}$	$\frac{\sqrt{3}}{2}$	$\frac{1}{\sqrt{2}}$	$-\frac{\sqrt{3}}{2}$
$\tan \theta$	und.	$-\sqrt{3}$	$-\frac{1}{\sqrt{3}}$	1	$-\frac{1}{\sqrt{3}}$
$\cot \theta$	0	$-\frac{1}{\sqrt{3}}$	$-\sqrt{3}$	1	$-\sqrt{3}$
$\sec \theta$	und.	2	$\frac{2}{\sqrt{3}}$	$\sqrt{2}$	$-\frac{2}{\sqrt{3}}$
$\csc \theta$	1	$-\frac{2}{\sqrt{3}}$	-2	$\sqrt{2}$	2

7. $\cos x = -\frac{4}{5}, \tan x = -\frac{3}{4}$

9. $\sin x = -\frac{\sqrt{8}}{3}, \tan x = -\sqrt{8}$

11. $\sin x = -\frac{1}{\sqrt{5}}, \cos x = -\frac{2}{\sqrt{5}}$

13.



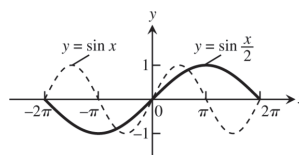
period = π

8. $\sin x = \frac{2}{\sqrt{5}}, \cos x = \frac{1}{\sqrt{5}}$

10. $\sin x = \frac{12}{13}, \tan x = -\frac{12}{5}$

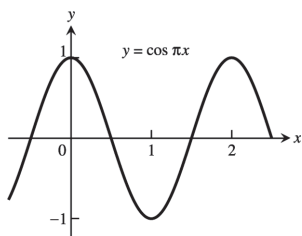
12. $\cos x = -\frac{\sqrt{3}}{2}, \tan x = \frac{1}{\sqrt{3}}$

14.



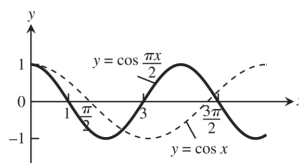
period = 4π

15.



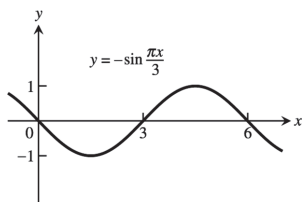
period = 2

16.



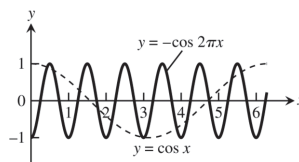
period = 4

17.



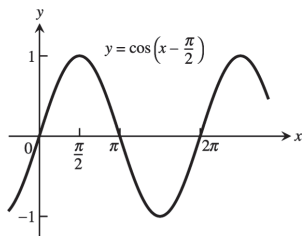
period = 6

18.



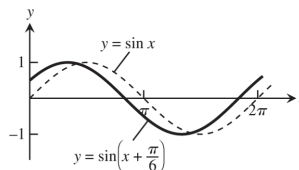
period = 1

19.



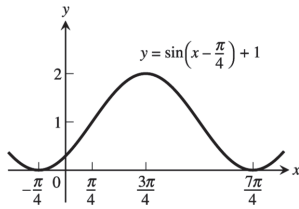
period = 2π

20.



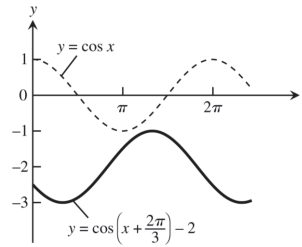
period = 2π

21.



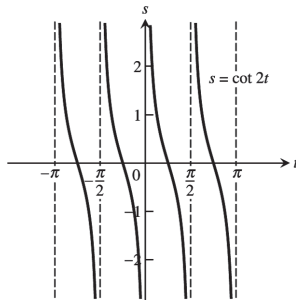
period = 2π

22.

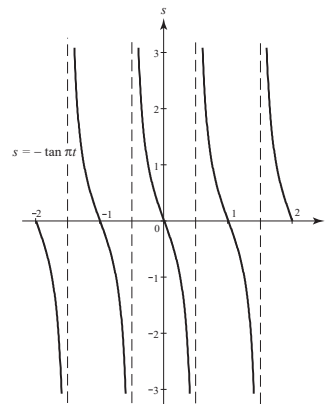


period = 2π

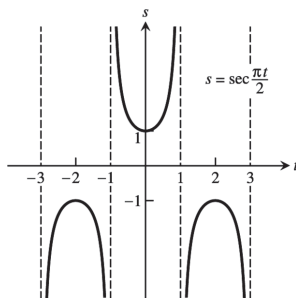
23. period = $\frac{\pi}{2}$, symmetric about the origin



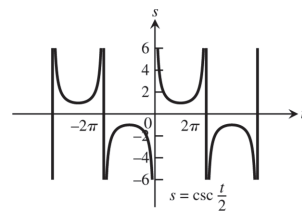
24. period = 1, symmetric about the origin



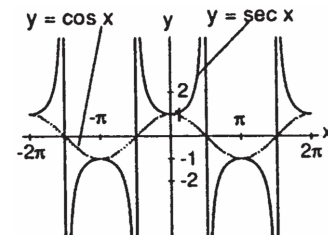
25. period = 4, symmetric about the s -axis



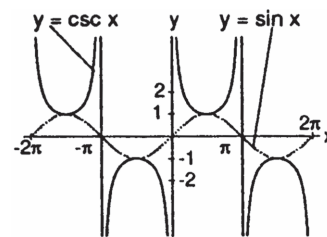
26. period = 4π , symmetric about the origin



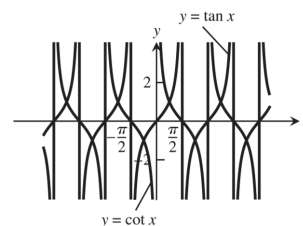
27. (a) $\cos x$ and $\sec x$ are positive for x in the interval $(-\frac{\pi}{2}, \frac{\pi}{2})$; and $\cos x$ and $\sec x$ are negative for x in the intervals $(-\frac{3\pi}{2}, -\frac{\pi}{2})$ and $(\frac{\pi}{2}, \frac{3\pi}{2})$. $\sec x$ is undefined when $\cos x$ is 0. The range of $\sec x$ is $(-\infty, -1] \cup [1, \infty)$; the range of $\cos x$ is $[-1, 1]$.



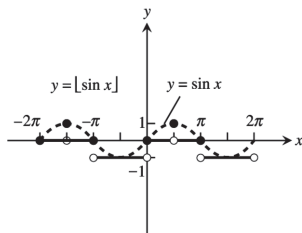
- (b) $\sin x$ and $\csc x$ are positive for x in the intervals $(-\frac{3\pi}{2}, -\pi)$ and $(0, \pi)$; and $\sin x$ and $\csc x$ are negative for x in the intervals $(-\pi, 0)$ and $(\pi, \frac{3\pi}{2})$. $\csc x$ is undefined when $\sin x$ is 0. The range of $\csc x$ is $(-\infty, -1] \cup [1, \infty)$; the range of $\sin x$ is $[-1, 1]$.



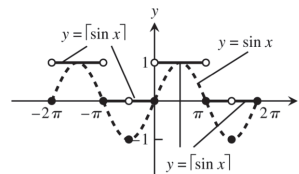
28. Since $\cot x = \frac{1}{\tan x}$, $\cot x$ is undefined when $\tan x = 0$ and is zero when $\tan x$ is undefined. As $\tan x$ approaches zero through positive values, $\cot x$ approaches infinity. Also, $\cot x$ approaches negative infinity as $\tan x$ approaches zero through negative values.



29. $D: -\infty < x < \infty; R: y = -1, 0, 1$



30. $D: -\infty < x < \infty; R: y = -1, 0, 1$



31. $\cos\left(x - \frac{\pi}{2}\right) = \cos x \cos\left(-\frac{\pi}{2}\right) - \sin x \sin\left(-\frac{\pi}{2}\right) = (\cos x)(0) - (\sin x)(-1) = \sin x$
32. $\cos\left(x + \frac{\pi}{2}\right) = \cos x \cos\left(\frac{\pi}{2}\right) - \sin x \sin\left(\frac{\pi}{2}\right) = (\cos x)(0) - (\sin x)(1) = -\sin x$
33. $\sin\left(x + \frac{\pi}{2}\right) = \sin x \cos\left(\frac{\pi}{2}\right) + \cos x \sin\left(\frac{\pi}{2}\right) = (\sin x)(0) + (\cos x)(1) = \cos x$
34. $\sin\left(x - \frac{\pi}{2}\right) = \sin x \cos\left(-\frac{\pi}{2}\right) + \cos x \sin\left(-\frac{\pi}{2}\right) = (\sin x)(0) + (\cos x)(-1) = -\cos x$
35. $\cos(A - B) = \cos(A + (-B)) = \cos A \cos(-B) - \sin A \sin(-B) = \cos A \cos B - \sin A(-\sin B)$
 $= \cos A \cos B + \sin A \sin B$
36. $\sin(A - B) = \sin(A + (-B)) = \sin A \cos(-B) + \cos A \sin(-B) = \sin A \cos B + \cos A(-\sin B)$
 $= \sin A \cos B - \cos A \sin B$
37. If $B = A$, $A - B = 0 \Rightarrow \cos(A - B) = \cos 0 = 1$. Also $\cos(A - B) = \cos(A - A) = \cos A \cos A + \sin A \sin A$
 $= \cos^2 A + \sin^2 A$. Therefore, $\cos^2 A + \sin^2 A = 1$.
38. If $B = 2\pi$, then $\cos(A + 2\pi) = \cos A \cos 2\pi - \sin A \sin 2\pi = (\cos A)(1) - (\sin A)(0) = \cos A$ and
 $\sin(A + 2\pi) = \sin A \cos 2\pi + \cos A \sin 2\pi = (\sin A)(1) + (\cos A)(0) = \sin A$. The result agrees with the fact that the cosine and sine functions have period 2π .
39. $\cos(\pi + x) = \cos \pi \cos x - \sin \pi \sin x = (-1)(\cos x) - (0)(\sin x) = -\cos x$

40. $\sin(2\pi - x) = \sin 2\pi \cos(-x) + \cos(2\pi) \sin(-x) = (0)(\cos(-x)) + (1)(\sin(-x)) = -\sin x$
41. $\sin\left(\frac{3\pi}{2} - x\right) = \sin\left(\frac{3\pi}{2}\right)\cos(-x) + \cos\left(\frac{3\pi}{2}\right)\sin(-x) = (-1)(\cos x) + (0)(\sin(-x)) = -\cos x$
42. $\cos\left(\frac{3\pi}{2} + x\right) = \cos\left(\frac{3\pi}{2}\right)\cos x - \sin\left(\frac{3\pi}{2}\right)\sin x = (0)(\cos x) - (-1)(\sin x) = \sin x$
43. $\sin\frac{7\pi}{12} = \sin\left(\frac{\pi}{4} + \frac{\pi}{3}\right) = \sin\frac{\pi}{4}\cos\frac{\pi}{3} + \cos\frac{\pi}{4}\sin\frac{\pi}{3} = \left(\frac{\sqrt{2}}{2}\right)\left(\frac{1}{2}\right) + \left(\frac{\sqrt{2}}{2}\right)\left(\frac{\sqrt{3}}{2}\right) = \frac{\sqrt{6} + \sqrt{2}}{4}$
44. $\cos\frac{11\pi}{12} = \cos\left(\frac{\pi}{4} + \frac{2\pi}{3}\right) = \cos\frac{\pi}{4}\cos\frac{2\pi}{3} - \sin\frac{\pi}{4}\sin\frac{2\pi}{3} = \left(\frac{\sqrt{2}}{2}\right)\left(-\frac{1}{2}\right) - \left(\frac{\sqrt{2}}{2}\right)\left(\frac{\sqrt{3}}{2}\right) = -\frac{\sqrt{2} + \sqrt{6}}{4}$
45. $\cos\frac{\pi}{12} = \cos\left(\frac{\pi}{3} - \frac{\pi}{4}\right) = \cos\frac{\pi}{3}\cos\left(-\frac{\pi}{4}\right) - \sin\frac{\pi}{3}\sin\left(-\frac{\pi}{4}\right) = \left(\frac{1}{2}\right)\left(\frac{\sqrt{2}}{2}\right) - \left(\frac{\sqrt{3}}{2}\right)\left(-\frac{\sqrt{2}}{2}\right) = \frac{1 + \sqrt{3}}{2\sqrt{2}}$
46. $\sin\frac{5\pi}{12} = \sin\left(\frac{2\pi}{3} - \frac{\pi}{4}\right) = \sin\left(\frac{2\pi}{3}\right)\cos\left(-\frac{\pi}{4}\right) + \cos\left(\frac{2\pi}{3}\right)\sin\left(-\frac{\pi}{4}\right) = \left(\frac{\sqrt{3}}{2}\right)\left(\frac{\sqrt{2}}{2}\right) + \left(-\frac{1}{2}\right)\left(-\frac{\sqrt{2}}{2}\right) = \frac{1 + \sqrt{3}}{2\sqrt{2}}$
47. $\cos^2\frac{\pi}{8} = \frac{1 + \cos\left(\frac{2\pi}{8}\right)}{2} = \frac{1 + \frac{\sqrt{2}}{2}}{2} = \frac{2 + \sqrt{2}}{4}$
48. $\cos^2\frac{5\pi}{12} = \frac{1 + \cos\left(\frac{10\pi}{12}\right)}{2} = \frac{1 + \left(-\frac{\sqrt{3}}{2}\right)}{2} = \frac{2 - \sqrt{3}}{4}$
49. $\sin^2\frac{\pi}{12} = \frac{1 - \cos\left(\frac{2\pi}{12}\right)}{2} = \frac{1 - \frac{\sqrt{3}}{2}}{2} = \frac{2 - \sqrt{3}}{4}$
50. $\sin^2\frac{3\pi}{8} = \frac{1 - \cos\left(\frac{6\pi}{8}\right)}{2} = \frac{1 - \left(-\frac{\sqrt{2}}{2}\right)}{2} = \frac{2 + \sqrt{2}}{4}$
51. $\sin^2\theta = \frac{3}{4} \Rightarrow \sin\theta = \pm\frac{\sqrt{3}}{2} \Rightarrow \theta = \frac{\pi}{3}, \frac{2\pi}{3}, \frac{4\pi}{3}, \frac{5\pi}{3}$
52. $\sin^2\theta = \cos^2\theta \Rightarrow \frac{\sin^2\theta}{\cos^2\theta} = \frac{\cos^2\theta}{\cos^2\theta} \Rightarrow \tan^2\theta = 1 \Rightarrow \tan\theta = \pm 1 \Rightarrow \theta = \frac{\pi}{4}, \frac{3\pi}{4}, \frac{5\pi}{4}, \frac{7\pi}{4}$
53. $\sin 2\theta - \cos\theta = 0 \Rightarrow 2\sin\theta\cos\theta - \cos\theta = 0 \Rightarrow \cos\theta(2\sin\theta - 1) = 0 \Rightarrow \cos\theta = 0$ or $2\sin\theta - 1 = 0$
 $\Rightarrow \cos\theta = 0$ or $\sin\theta = \frac{1}{2} \Rightarrow \theta = \frac{\pi}{2}, \frac{3\pi}{2}$, or $\theta = \frac{\pi}{6}, \frac{5\pi}{6} \Rightarrow \theta = \frac{\pi}{6}, \frac{\pi}{2}, \frac{5\pi}{6}, \frac{3\pi}{2}$
54. $\cos 2\theta + \cos\theta = 0 \Rightarrow 2\cos^2\theta - 1 + \cos\theta = 0 \Rightarrow 2\cos^2\theta + \cos\theta - 1 = 0 \Rightarrow (\cos\theta + 1)(2\cos\theta - 1) = 0$
 $\Rightarrow \cos\theta + 1 = 0$ or $2\cos\theta - 1 = 0 \Rightarrow \cos\theta = -1$ or $\cos\theta = \frac{1}{2} \Rightarrow \theta = \pi$ or $\theta = \frac{\pi}{3}, \frac{5\pi}{3} \Rightarrow \theta = \frac{\pi}{3}, \pi, \frac{5\pi}{3}$
55. $\tan(A + B) = \frac{\sin(A + B)}{\cos(A + B)} = \frac{\sin A \cos B + \cos A \sin B}{\cos A \cos B - \sin A \sin B} = \frac{\frac{\sin A \cos B}{\cos A \cos B} + \frac{\cos A \sin B}{\cos A \cos B}}{\frac{\cos A \cos B}{\cos A \cos B} - \frac{\sin A \sin B}{\cos A \cos B}} = \frac{\tan A + \tan B}{1 - \tan A \tan B}$
56. $\tan(A - B) = \frac{\sin(A - B)}{\cos(A - B)} = \frac{\sin A \cos B - \cos A \sin B}{\cos A \cos B + \sin A \sin B} = \frac{\frac{\sin A \cos B}{\cos A \cos B} - \frac{\cos A \sin B}{\cos A \cos B}}{\frac{\cos A \cos B}{\cos A \cos B} + \frac{\sin A \sin B}{\cos A \cos B}} = \frac{\tan A - \tan B}{1 + \tan A \tan B}$
57. According to the figure in the text, we have the following: By the law of cosines, $c^2 = a^2 + b^2 - 2ab \cos\theta$
 $= 1^2 + 1^2 - 2\cos(A - B) = 2 - 2\cos(A - B)$. By distance formula, $c^2 = (\cos A - \cos B)^2 + (\sin A - \sin B)^2$
 $= \cos^2 A - 2\cos A \cos B + \cos^2 B + \sin^2 A - 2\sin A \sin B + \sin^2 B = 2 - 2(\cos A \cos B + \sin A \sin B)$. Thus
 $c^2 = 2 - 2\cos(A - B) = 2 - 2(\cos A \cos B + \sin A \sin B) \Rightarrow \cos(A - B) = \cos A \cos B + \sin A \sin B$.

58. (a) $\cos(A - B) = \cos A \cos B + \sin A \sin B$
 $\sin \theta = \cos\left(\frac{\pi}{2} - \theta\right)$ and $\cos \theta = \sin\left(\frac{\pi}{2} - \theta\right)$
 Let $\theta = A + B$
 $\sin(A + B) = \cos\left[\frac{\pi}{2} - (A + B)\right] = \cos\left[\left(\frac{\pi}{2} - A\right) - B\right] = \cos\left(\frac{\pi}{2} - A\right) \cos B + \sin\left(\frac{\pi}{2} - A\right) \sin B$
 $= \sin A \cos B + \cos A \sin B$
- (b) $\cos(A - B) = \cos A \cos B + \sin A \sin B$
 $\cos(A - (-B)) = \cos A \cos(-B) + \sin A \sin(-B)$
 $\Rightarrow \cos(A + B) = \cos A \cos(-B) + \sin A \sin(-B) = \cos A \cos B + \sin A(-\sin B) = \cos A \cos B - \sin A \sin B$
 Because the cosine function is even and the sine functions is odd.

59. $c^2 = a^2 + b^2 - 2ab \cos C = 2^2 + 3^2 - 2(2)(3) \cos(60^\circ) = 4 + 9 - 12 \cos(60^\circ) = 13 - 12\left(\frac{1}{2}\right) = 7.$
 Thus, $c = \sqrt{7} \approx 2.65.$

60. $c^2 = a^2 + b^2 - 2ab \cos C = 2^2 + 3^2 - 2(2)(3) \cos(40^\circ) = 13 - 12 \cos(40^\circ).$ Thus, $c = \sqrt{13 - 12 \cos 40^\circ} \approx 1.951.$

61. From the figures in the text, we see that $\sin B = \frac{h}{c}$. If C is an acute angle, then $\sin C = \frac{h}{b}$. On the other hand, if C is obtuse (as in the figure on the right in the text), then $\sin C = \sin(\pi - C) = \frac{h}{b}$. Thus, in either case, $h = b \sin C = c \sin B \Rightarrow ah = ab \sin C = ac \sin B.$

By the law of cosines, $\cos C = \frac{a^2 + b^2 - c^2}{2ab}$ and $\cos B = \frac{a^2 + c^2 - b^2}{2ac}$. Moreover, since the sum of the interior angles of triangle is π , we have $\sin A = \sin(\pi - (B + C)) = \sin(B + C) = \sin B \cos C + \cos B \sin C$
 $= \left(\frac{h}{c}\right) \left[\frac{a^2 + b^2 - c^2}{2ab}\right] + \left[\frac{a^2 + c^2 - b^2}{2ac}\right] \left(\frac{h}{b}\right) = \left(\frac{h}{2abc}\right)(2a^2 + b^2 - c^2 + c^2 - b^2) = \frac{ah}{bc} \Rightarrow ah = bc \sin A.$

Combining our results we have $ah = ab \sin C$, $ah = ac \sin B$, and $ah = bc \sin A$. Dividing by abc gives
 $\frac{h}{bc} = \frac{\sin A}{a} = \frac{\sin C}{c} = \frac{\sin B}{b}.$
 law of sines

62. By the law of sines, $\frac{\sin A}{2} = \frac{\sin B}{3} = \frac{\sqrt{3}/2}{c}$. By Exercise 59 we know that $c = \sqrt{7}$. Thus $\sin B = \frac{3\sqrt{3}}{2\sqrt{7}} \approx 0.982.$

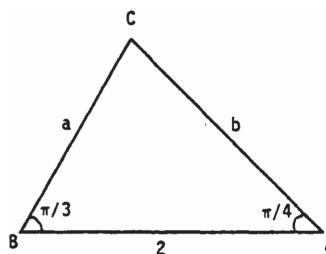
63. From the figure at the right and the law of cosines,
 $b^2 = a^2 + 2^2 - 2(2a) \cos B$

$= a^2 + 4 - 4a\left(\frac{1}{2}\right) = a^2 - 2a + 4.$

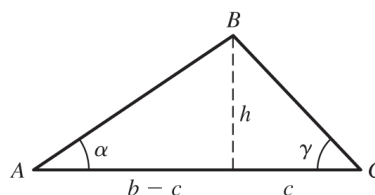
Applying the law of sines to the figure, $\frac{\sin A}{a} = \frac{\sin B}{b}$

$\Rightarrow \frac{\sqrt{2}/2}{a} = \frac{\sqrt{3}/2}{b} \Rightarrow b = \sqrt{\frac{3}{2}} a.$ Thus, combining results,

$a^2 - 2a + 4 = b^2 = \frac{3}{2} a^2 \Rightarrow 0 = \frac{1}{2} a^2 + 2a - 4 \Rightarrow 0 = a^2 + 4a - 8.$ From the quadratic formula and the fact that $a > 0$, we have $a = \frac{-4 + \sqrt{4^2 - 4(1)(-8)}}{2} = \frac{4\sqrt{3} - 4}{2} \approx 1.464.$



64. $\tan \gamma = \frac{h}{c} \Rightarrow c = \frac{h}{\tan \gamma}$
 $\tan \alpha = \frac{h}{b-c} = \frac{h}{b - \frac{h}{\tan \gamma}} = \frac{h \tan \gamma}{b \tan \gamma - h} \Rightarrow$
 $b \tan \alpha \tan \gamma - h \tan \alpha = h \tan \gamma \Rightarrow$
 $b \tan \alpha \tan \gamma = h \tan \alpha + h \tan \gamma \Rightarrow$



$$b \tan \alpha \tan \gamma = h(\tan \alpha + \tan \gamma) \Rightarrow$$

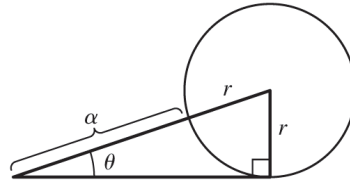
$$h = \frac{b \tan \alpha \tan \gamma}{\tan \alpha + \tan \gamma}$$

65. $\sin \theta = \frac{r}{\alpha + r}$

$$\Rightarrow \alpha \sin \theta + r \sin \theta = r$$

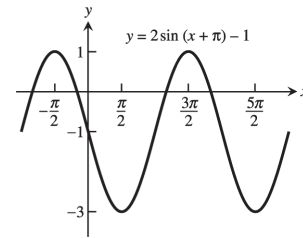
$$\Rightarrow \alpha \sin \theta = r - r \sin \theta = r(1 - \sin \theta)$$

$$\Rightarrow r = \frac{\alpha \sin \theta}{1 - \sin \theta}$$

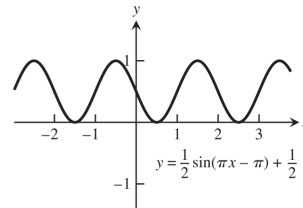


66. (a) The graphs of $y = \sin x$ and $y = x$ nearly coincide when x is near the origin (when the calculator is in radians mode).
 (b) In degree mode, when x is near zero degrees the sine of x is much closer to zero than x itself. The curves look like intersecting straight lines near the origin when the calculator is in degree mode.

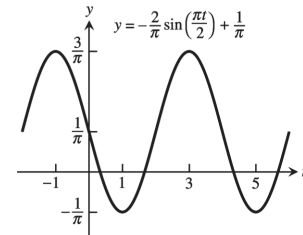
67. $A = 2, B = 2\pi, C = -\pi, D = -1$



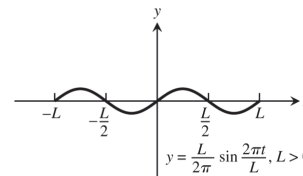
68. $A = \frac{1}{2}, B = 2, C = 1, D = \frac{1}{2}$



69. $A = -\frac{2}{\pi}, B = 4, C = 0, D = \frac{1}{\pi}$



70. $A = \frac{L}{2\pi}, B = L, C = 0, D = 0$



71–74. Example CAS commands:

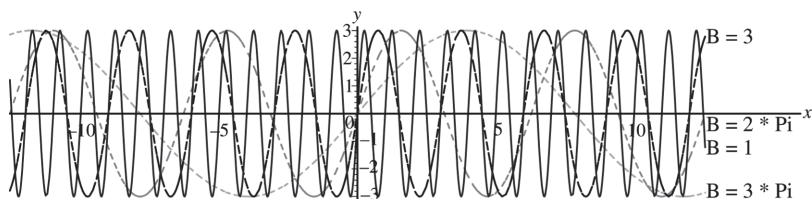
Maple:

```
f := x -> A*sin((2*Pi/B)*(x-C))+D1;
A:=3; C:=0; D1:=0;
f_list := [seq(f(x), B=[1,3,2*Pi,5*Pi])];
plot(f_list, x=-4*Pi..4*Pi, scaling=constrained,
     color=[red,blue,green,cyan], linestyle=[1,3,4,7],
     legend=["B=1", "B=3", "B=2*Pi", "B=3*Pi"],
     title="#71 (Section 1.3)");
```

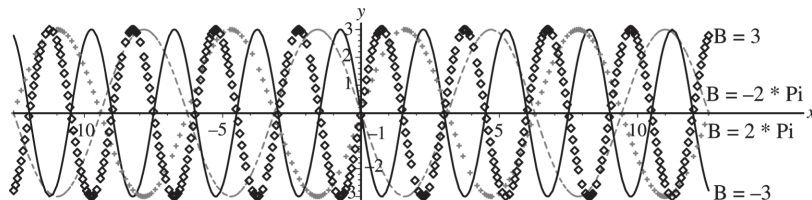
Mathematica:

```
Clear[a, b, c, d, f, x]
f[x_]:=a Sin[2π/b (x - c)]+d
Plot[f[x]/.{a -> 3, b -> 1, c -> 0, d -> 0}, {x, -4π, 4π}]
```

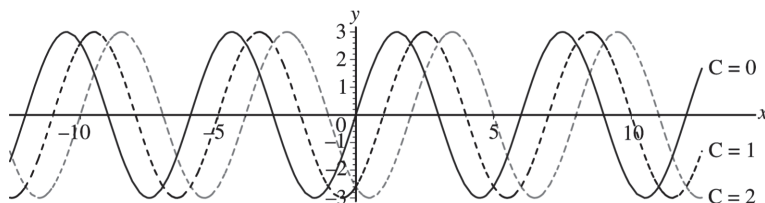
71. (a) The graph stretches horizontally.



(b) The period remains the same: period = $|B|$. The graph has a horizontal shift of $\frac{1}{2}$ period.



72. (a) The graph is shifted right C units.

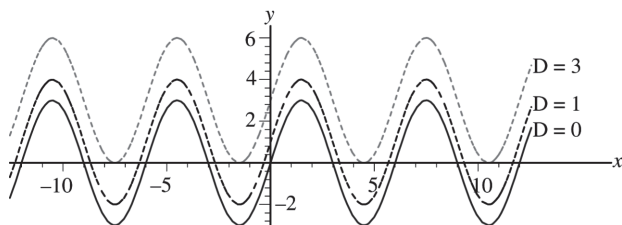


(b) The graph is shifted left C units.

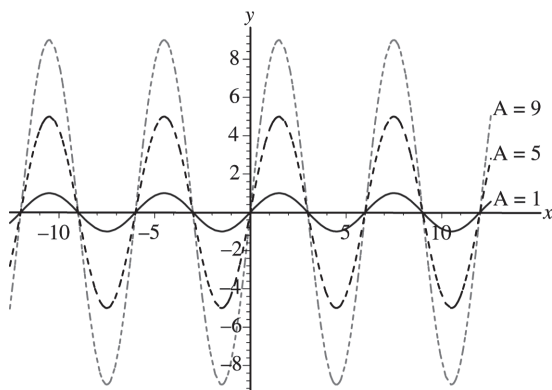
(c) A shift of \pm one period will produce no apparent shift. $|C| = 6$

73. (a) The graph shifts upwards $|D|$ units for $D > 0$

(b) The graph shifts down $|D|$ units for $D < 0$.



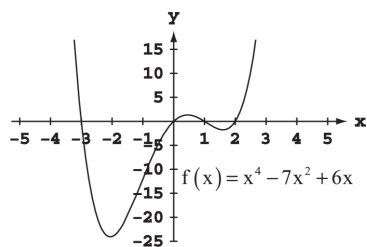
74. (a) The graph stretches $|A|$ units. (b) For $A < 0$, the graph is inverted.



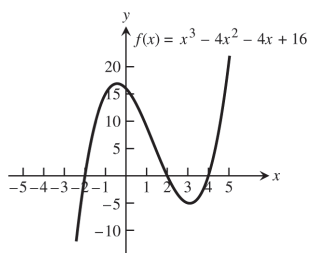
1.4 GRAPHING WITH SOFTWARE

1–4. The most appropriate viewing window displays the maxima, minima, intercepts, and end behavior of the graphs and has little unused space.

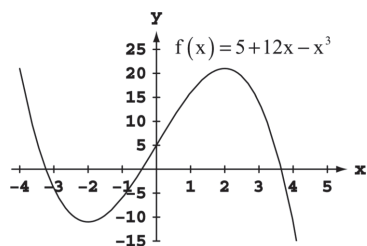
1. d.



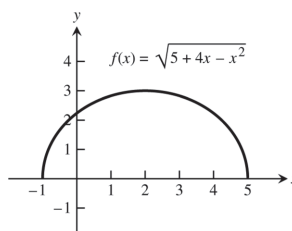
2. c.



3. d.

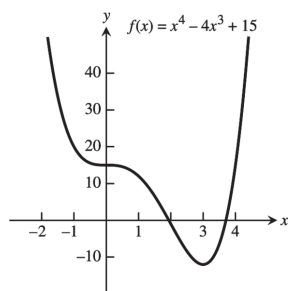


4. b.

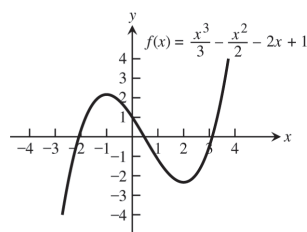


5–30. For any display there are many appropriate display windows. The graphs given as answers in Exercises 5–30 are not unique in appearance.

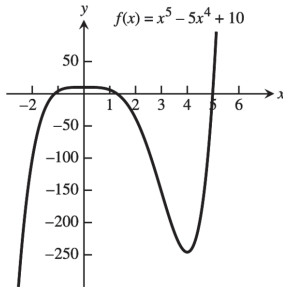
5. $[-2, 5]$ by $[-15, 40]$



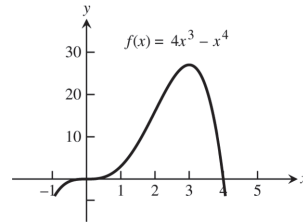
6. $[-4, 4]$ by $[-4, 4]$



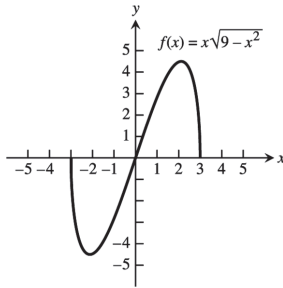
7. $[-2, 6]$ by $[-250, 50]$



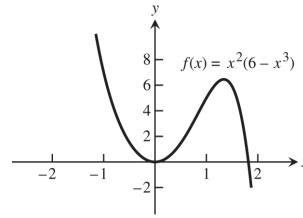
8. $[-1, 5]$ by $[-5, 30]$



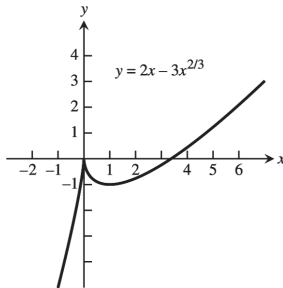
9. $[-4, 4]$ by $[-5, 5]$



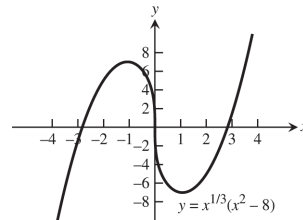
10. $[-2, 2]$ by $[-2, 8]$



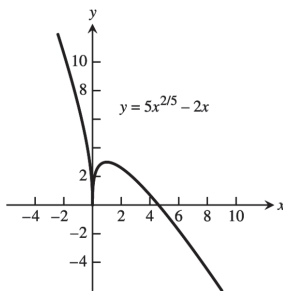
11. $[-2, 6]$ by $[-5, 4]$



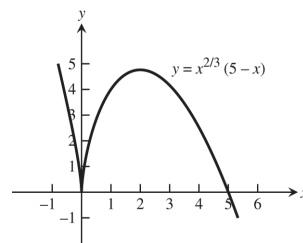
12. $[-4, 4]$ by $[-8, 8]$



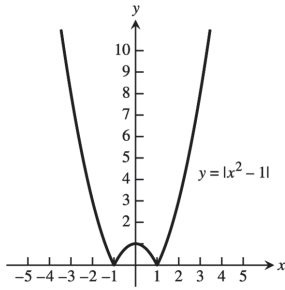
13. $[-1, 6]$ by $[-1, 4]$



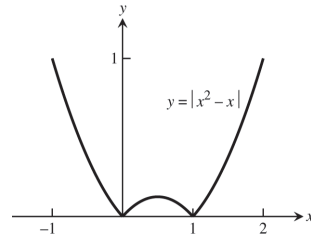
14. $[-1, 6]$ by $[-1, 5]$



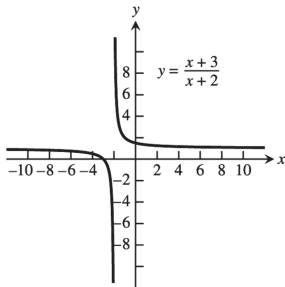
15. $[-3, 3]$ by $[0, 10]$



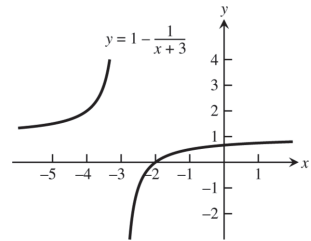
16. $[-1, 2]$ by $[0, 1]$



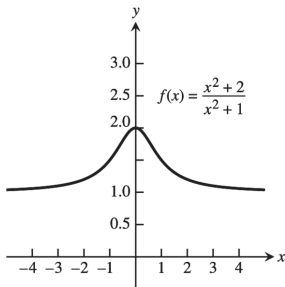
17. $[-5, 1]$ by $[-5, 5]$



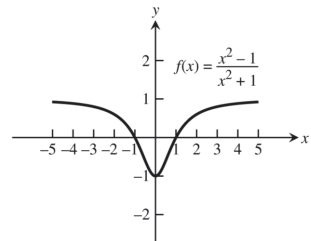
18. $[-5, 1]$ by $[-2, 4]$



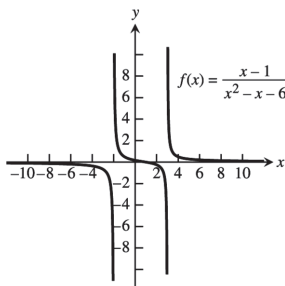
19. $[-4, 4]$ by $[0, 3]$



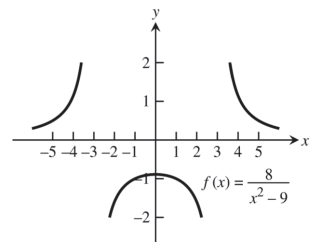
20. $[-5, 5]$ by $[-2, 2]$



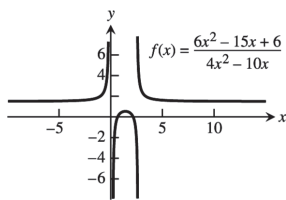
21. $[-10, 10]$ by $[-6, 6]$



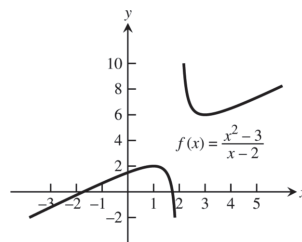
22. $[-5, 5]$ by $[-2, 2]$



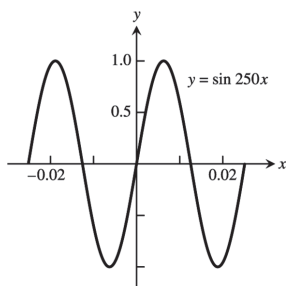
23. $[-6, 10]$ by $[-6, 6]$



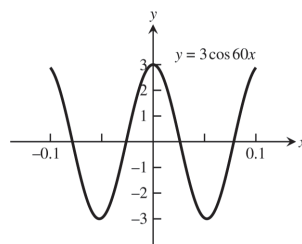
24. $[-3, 5]$ by $[-2, 10]$



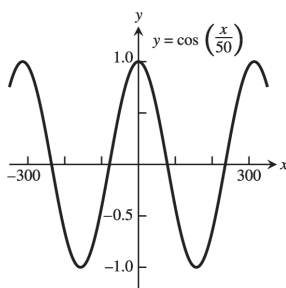
25. $[-0.03, 0.03]$ by $[-1.25, 1.25]$



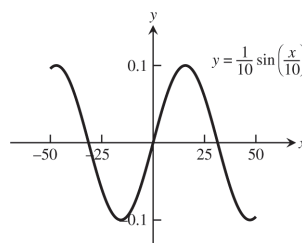
26. $[-0.1, 0.1]$ by $[-3, 3]$



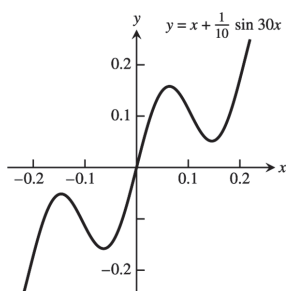
27. $[-300, 300]$ by $[-1.25, 1.25]$



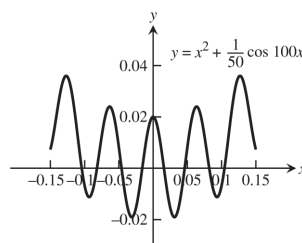
28. $[-50, 50]$ by $[-0.1, 0.1]$



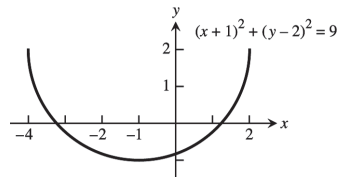
29. $[-0.25, 0.25]$ by $[-0.3, 0.3]$



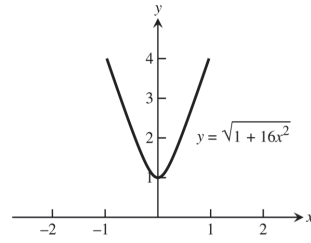
30. $[-0.15, 0.15]$ by $[-0.02, 0.05]$



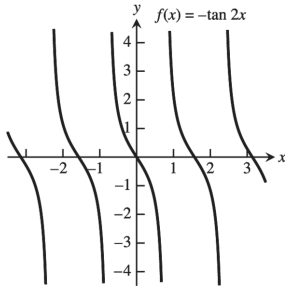
31. $x^2 + 2x = 4 + 4y - y^2 \Rightarrow y = 2 \pm \sqrt{-x^2 - 2x + 8}$.
The lower half is produced by graphing
 $y = 2 - \sqrt{-x^2 - 2x + 8}$.



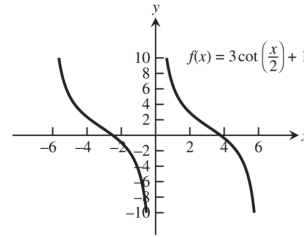
32. $y^2 - 16x^2 = 1 \Rightarrow y = \pm \sqrt{1 + 16x^2}$. The upper branch is produced by graphing $y = \sqrt{1 + 16x^2}$.



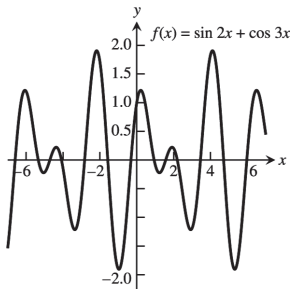
33.



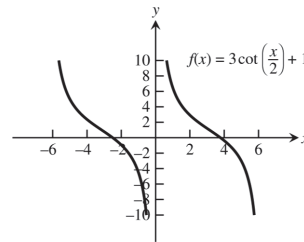
34.



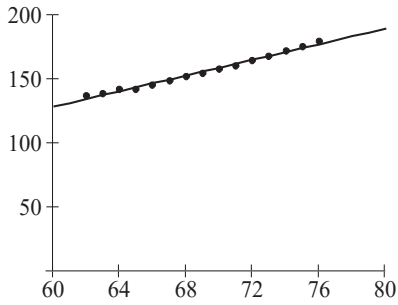
35.



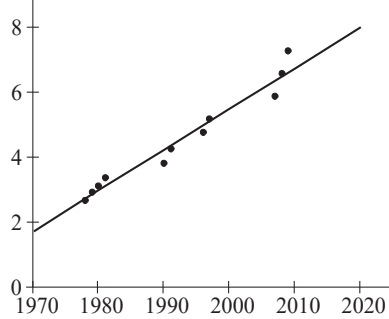
36.



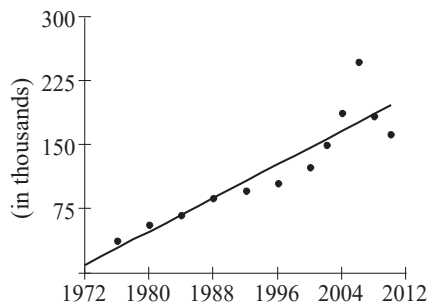
37.



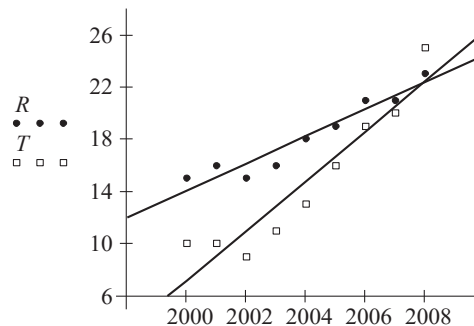
38.



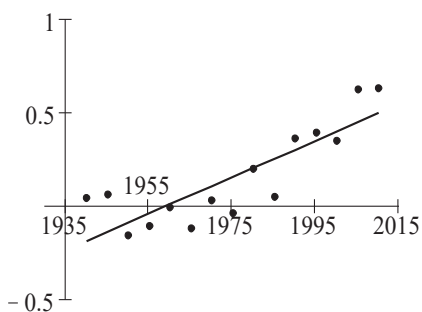
39.



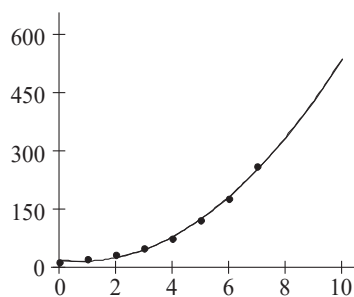
40.



41.



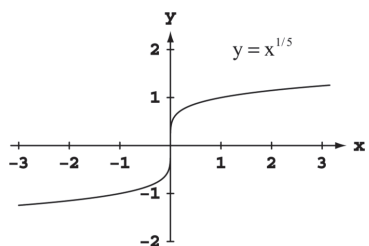
42.



CHAPTER 1 PRACTICE EXERCISES

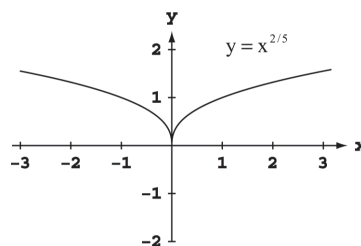
1. The area is $A = \pi r^2$ and the circumference is $C = 2\pi r$. Thus, $r = \frac{C}{2\pi} \Rightarrow A = \pi \left(\frac{C}{2\pi}\right)^2 = \frac{C^2}{4\pi}$.
2. The surface area is $S = 4\pi r^2 \Rightarrow r = \left(\frac{S}{4\pi}\right)^{1/2}$. The volume is $V = \frac{4}{3}\pi r^3 \Rightarrow r = \sqrt[3]{\frac{3V}{4\pi}}$. Substitution into the formula for surface area gives $S = 4\pi r^2 = 4\pi \left(\frac{3V}{4\pi}\right)^{2/3}$.
3. The coordinates of a point on the parabola are (x, x^2) . The angle of inclination θ joining this point to the origin satisfies the equation $\tan \theta = \frac{x^2}{x} = x$. Thus the point has coordinates $(x, x^2) = (\tan \theta, \tan^2 \theta)$.
4. $\tan \theta = \frac{\text{rise}}{\text{run}} = \frac{h}{500} \Rightarrow h = 500 \tan \theta$ ft.

5.



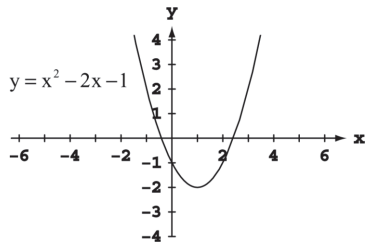
Symmetric about the origin.

6.



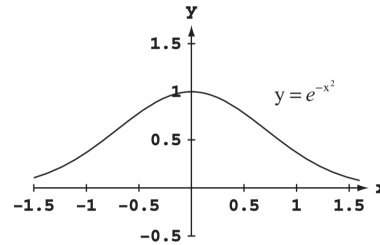
Symmetric about the y-axis.

7.



Neither

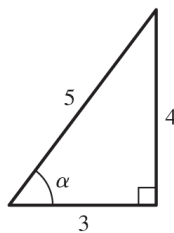
8.



Symmetric about the y-axis.

9. $y(-x) = (-x)^2 + 1 = x^2 + 1 = y(x)$. Even.
10. $y(-x) = (-x)^5 - (-x)^3 - (-x) = -x^5 + x^3 + x = -y(x)$. Odd.
11. $y(-x) = 1 - \cos(-x) = 1 - \cos x = y(x)$. Even.
12. $y(-x) = \sec(-x) \tan(-x) = \frac{\sin(-x)}{\cos^2(-x)} = \frac{-\sin x}{\cos^2 x} = -\sec x \tan x = -y(x)$. Odd.
13. $y(-x) = \frac{(-x)^4 + 1}{(-x)^3 - 2(-x)} = \frac{x^4 + 1}{-x^3 + 2x} = -\frac{x^4 + 1}{x^3 - 2x} = -y(x)$. Odd.
14. $y(-x) = (-x) - \sin(-x) = (-x) + \sin x = -(x - \sin x) = -y(x)$. Odd.
15. $y(-x) = -x + \cos(-x) = -x + \cos x$. Neither even nor odd.
16. $y(-x) = (-x) \cos(-x) = -x \cos x = -y(x)$. Odd.
17. Since f and g are odd $\Rightarrow f(-x) = -f(x)$ and $g(-x) = -g(x)$.
- (a) $(f \cdot g)(-x) = f(-x)g(-x) = [-f(x)][-g(x)] = f(x)g(x) = (f \cdot g)(x) \Rightarrow f \cdot g$ is even.
- (b) $f^3(-x) = f(-x)f(-x)f(-x) = [-f(x)][-f(x)][-f(x)] = -f(x) \cdot f(x) \cdot f(x) = -f^3(x) \Rightarrow f^3$ is odd.
- (c) $f(\sin(-x)) = f(-\sin(x)) = -f(\sin(x)) \Rightarrow f(\sin(x))$ is odd.
- (d) $g(\sec(-x)) = g(\sec(x)) \Rightarrow g(\sec(x))$ is even.
- (e) $|g(-x)| = |-g(x)| = |g(x)| \Rightarrow |g|$ is even.
18. Let $f(a-x) = f(a+x)$ and define $g(x) = f(x+a)$. Then $g(-x) = f((-x)+a) = f(a-x) = f(a+x) = f(x+a) = g(x) \Rightarrow g(x) = f(x+a)$ is even.
19. (a) The function is defined for all values of x , so the domain is $(-\infty, \infty)$.
 (b) Since $|x|$ attains all nonnegative values, the range is $[-2, \infty)$.
20. (a) Since the square root requires $1-x \geq 0$, the domain is $(-\infty, 1]$.
 (b) Since $\sqrt{1-x}$ attains all nonnegative values, the range is $[-2, \infty)$.
21. (a) Since the square root requires $16-x^2 \geq 0$, the domain is $[-4, 4]$.
 (b) For values of x in the domain, $0 \leq 16-x^2 \leq 16$, so $0 \leq \sqrt{16-x^2} \leq 4$. The range is $[0, 4]$.

22. (a) The function is defined for all values of x , so the domain is $(-\infty, \infty)$.
 (b) Since 3^{2-x} attains all positive values, the range is $(1, \infty)$.
23. (a) The function is defined for all values of x , so the domain is $(-\infty, \infty)$.
 (b) Since $2e^{-x}$ attains all positive values, the range is $(-3, \infty)$.
24. (a) The function is equivalent to $y = \tan 2x$, so we require $2x \neq \frac{k\pi}{2}$ for odd integers k . The domain is given by $x \neq \frac{k\pi}{4}$ for odd integers k .
 (b) Since the tangent function attains all values, the range is $(-\infty, \infty)$.
25. (a) The function is defined for all values of x , so the domain is $(-\infty, \infty)$.
 (b) The sine function attains values from -1 to 1 , so $-2 \leq 2 \sin(3x + \pi) \leq 2$ and hence $-3 \leq 2 \sin(3x + \pi) - 1 \leq 1$. The range is $[-3, 1]$.
26. (a) The function is defined for all values of x , so the domain is $(-\infty, \infty)$.
 (b) The function is equivalent to $y = \sqrt[5]{x^2}$, which attains all nonnegative values. The range is $[0, \infty)$.
27. (a) The logarithm requires $x - 3 > 0$, so the domain is $(3, \infty)$.
 (b) The logarithm attains all real values, so the range is $(-\infty, \infty)$.
28. (a) The function is defined for all values of x , so the domain is $(-\infty, \infty)$.
 (b) The cube root attains all real values, so the range is $(-\infty, \infty)$.
29. $y = 5 - \sqrt{(x-3)(x+1)}$ so the domain $= (-\infty, -1] \cup [3, \infty)$; $\sqrt{(x-3)(x+1)} \geq 0$ and can be any positive number, so the range $= (-\infty, 5]$.
30. $y = 2 + \frac{3x^2}{x^2+4}$ so the domain $= (-\infty, \infty)$; $0 \leq \frac{3x^2}{x^2+4} < 3$ so the range $= [2, 5)$.
31. $y = 4 \sin\left(\frac{1}{x}\right)$ so the domain $= (-\infty, 0) \cup (0, \infty)$; if $\frac{2}{3\pi} \leq x \leq \frac{2}{\pi}$, then $-1 \leq \sin\left(\frac{1}{x}\right) \leq 1$, so the range $= [-4, 4]$.
32. $y = 3 \cos x + 4 \sin x$ so the domain $= (-\infty, \infty)$;
 and $\sqrt{3^2 + 4^2} = 5$ so $3 \cos x + 4 \sin x = 5\left(\frac{3}{5} \cos x + \frac{4}{5} \sin x\right)$
 $= 5(\cos \alpha \cos x + \sin \alpha \sin x) = 5 \cos(\alpha - x)$, and
 $-1 \leq \cos(\alpha - x) \leq 1$ so the range $= [-5, 5]$.



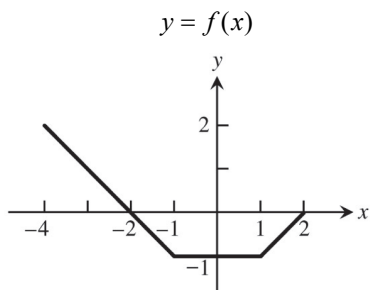
33. (a) Increasing because volume increases as radius increases.
 (b) Neither, since the greatest integer function is composed of horizontal (constant) line segments.
 (c) Decreasing because as the height increases, the atmospheric pressure decreases.
 (d) Increasing because the kinetic (motion) energy increases as the particles velocity increases.
34. (a) Increasing on $[2, \infty)$ (b) Increasing on $[-1, \infty)$
 (c) Increasing on $(-\infty, \infty)$ (d) Increasing on $\left[\frac{1}{2}, \infty\right)$
35. (a) The function is defined for $-4 \leq x \leq 4$, so the domain is $[-4, 4]$.
 (b) The function is equivalent to $y = \sqrt{|x|}$, $-4 \leq x \leq 4$, which attains values from 0 to 2 for x in the domain. The range is $[0, 2]$.

36. (a) The function is defined for $-2 \leq x \leq 2$, so the domain is $[-2, 2]$.
 (b) The range is $[-1, 1]$.
37. First piece: Line through $(0, 1)$ and $(1, 0)$. $m = \frac{0-1}{1-0} = \frac{-1}{1} = -1 \Rightarrow y = -x+1 = 1-x$
 Second piece: Line through $(1, 1)$ and $(2, 0)$. $m = \frac{0-1}{2-1} = \frac{-1}{1} = -1 \Rightarrow y = -(x-1)+1 = -x+2 = 2-x$

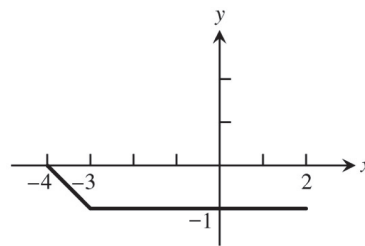
$$f(x) = \begin{cases} 1-x, & 0 \leq x < 1 \\ 2-x, & 1 \leq x \leq 2 \end{cases}$$
38. First piece: Line through $(0, 0)$ and $(2, 5)$. $m = \frac{5-0}{2-0} = \frac{5}{2} \Rightarrow y = \frac{5}{2}x$
 Second piece: Line through $(2, 5)$ and $(4, 0)$. $m = \frac{0-5}{4-2} = \frac{-5}{2} = -\frac{5}{2} \Rightarrow y = -\frac{5}{2}(x-2)+5 = -\frac{5}{2}x+10 = 10-\frac{5x}{2}$

$$f(x) = \begin{cases} \frac{5}{2}x, & 0 \leq x < 2 \\ 10-\frac{5x}{2}, & 2 \leq x \leq 4 \end{cases} \quad (\text{Note: } x = 2 \text{ can be included on either piece.})$$
39. (a) $(f \circ g)(-1) = f(g(-1)) = f\left(\frac{1}{\sqrt{-1+2}}\right) = f(1) = \frac{1}{1} = 1$
 (b) $(g \circ f)(2) = g(f(2)) = g\left(\frac{1}{2}\right) = \frac{1}{\sqrt{\frac{1}{2}+2}} = \frac{1}{\sqrt{2.5}}$ or $\sqrt{\frac{2}{5}}$
 (c) $(f \circ f)(x) = f(f(x)) = f\left(\frac{1}{x}\right) = \frac{1}{1/x} = x, x \neq 0$
 (d) $(g \circ g)(x) = g(g(x)) = g\left(\frac{1}{\sqrt{x+2}}\right) = \frac{1}{\sqrt{\frac{1}{\sqrt{x+2}}+2}} = \frac{\sqrt[4]{x+2}}{\sqrt{1+2\sqrt{x+2}}}$
40. (a) $(f \circ g)(-1) = f(g(-1)) = f\left(\sqrt[3]{-1+1}\right) = f(0) = 2-0 = 2$
 (b) $(g \circ f)(2) = f(g(2)) = g(2-2) = g(0) = \sqrt[3]{0+1} = 1$
 (c) $(f \circ f)(x) = f(f(x)) = f(2-x) = 2-(2-x) = x$
 (d) $(g \circ g)(x) = g(g(x)) = g\left(\sqrt[3]{x+1}\right) = \sqrt[3]{\sqrt[3]{x+1}+1}$
41. (a) $(f \circ g)(x) = f(g(x)) = f(\sqrt{x+2}) = 2-(\sqrt{x+2})^2 = -x, x \geq -2$.
 $(g \circ f)(x) = g(f(x)) = g(2-x^2) = \sqrt{(2-x^2)+2} = \sqrt{4-x^2}$
 (b) Domain of $f \circ g$: $[-2, \infty)$.
 Domain of $g \circ f$: $[-2, 2]$.
 (c) Range of $f \circ g$: $(-\infty, 2]$.
 Range of $g \circ f$: $[0, 2]$.
42. (a) $(f \circ g)(x) = f(g(x)) = f(\sqrt{1-x}) = \sqrt{\sqrt{1-x}} = \sqrt[4]{1-x}$.
 $(g \circ f)(x) = g(f(x)) = g(\sqrt{x}) = \sqrt{1-\sqrt{x}}$
 (b) Domain of $f \circ g$: $(-\infty, 1]$.
 Domain of $g \circ f$: $[0, 1]$.
 (c) Range of $f \circ g$: $[0, \infty)$.
 Range of $g \circ f$: $[0, 1]$.

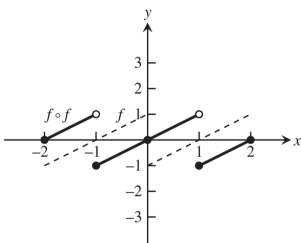
43.



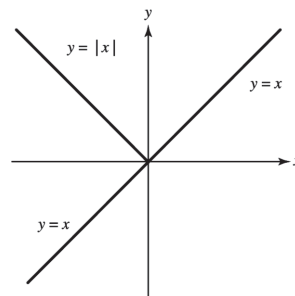
$y = (f \circ f)(x)$



44.

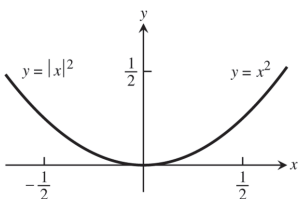


45.



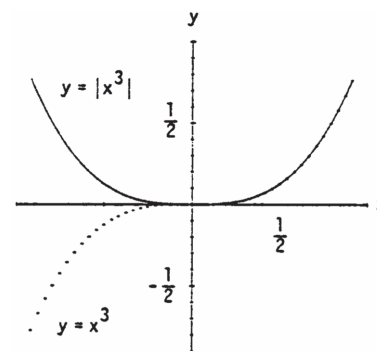
The graph of $f_2(x) = f_1(|x|)$ is the same as the graph of $f_1(x)$ to the right of the y -axis. The graph of $f_2(x)$ to the left of the y -axis is the reflection of $y = f_1(x)$, $x \geq 0$ across the y -axis.

46.



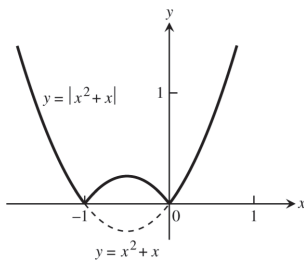
It does not change the graph.

47.



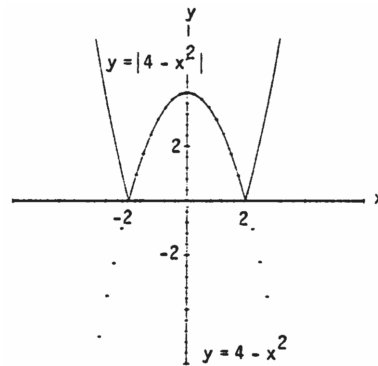
Whenever $g_1(x)$ is positive, the graph of $y = g_2(x) = |g_1(x)|$ is the same as the graph of $y = g_1(x)$. When $g_1(x)$ is negative, the graph of $y = g_2(x)$ is the reflection of the graph of $y = g_1(x)$ across the x -axis.

48.



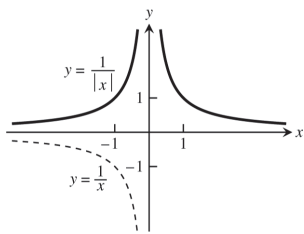
Whenever $g_1(x)$ is positive, the graph of $y = g_2(x) = |g_1(x)|$ is the same as the graph of $y = g_1(x)$. When $g_1(x)$ is negative, the graph of $y = g_2(x)$ is the reflection of the graph of $y = g_1(x)$ across the x -axis.

49.



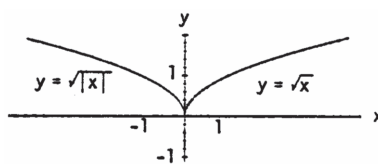
Whenever $g_1(x)$ is positive, the graph of $y = g_2(x) = |g_1(x)|$ is the same as graph of $y = g_1(x)$. When $g_1(x)$ is negative, the graph of $y = g_2(x)$ is the reflection of the graph of $y = g_1(x)$ across the x -axis.

50.



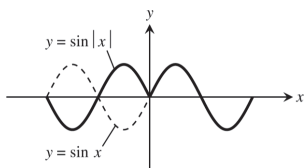
The graph of $f_2(x) = f_1(|x|)$ is the same as the graph of $f_1(x)$ to the right of the y -axis. The graph of $f_2(x)$ to the left of the y -axis is the reflection of $y = f_1(x)$, $x \geq 0$ across the y -axis.

51.



The graph of $f_2(x) = f_1(|x|)$ is the same as the graph of $f_1(x)$ to the right of the y -axis. The graph of $f_2(x)$ to the left of the y -axis is the reflection of $y = f_1(x)$, $x \geq 0$ across the y -axis.

52.



The graph of $f_2(x) = f_1(|x|)$ is the same as the graph of $f_1(x)$ to the right of the y -axis. The graph of $f_2(x)$ to the left of the y -axis is the reflection of $y = f_1(x)$, $x \geq 0$ across the y -axis.

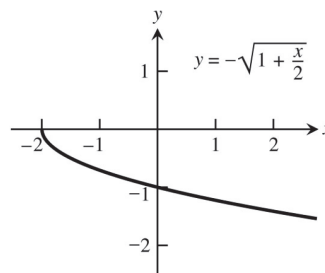
53. (a) $y = g(x-3) + \frac{1}{2}$
 (c) $y = g(-x)$
 (e) $y = 5 \cdot g(x)$

- (b) $y = g\left(x + \frac{2}{3}\right) - 2$
 (d) $y = -g(x)$
 (f) $y = g(5x)$

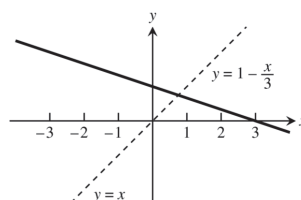
54. (a) Shift the graph of f right 5 units
 (b) Horizontally compress the graph of f by a factor of 4
 (c) Horizontally compress the graph of f by a factor of 3 and then reflect the graph about the y -axis

- (d) Horizontally compress the graph of f by a factor of 2 and then shift the graph left $\frac{1}{2}$ unit.
- (e) Horizontally stretch the graph of f by a factor of 3 and then shift the graph down 4 units.
- (f) Vertically stretch the graph of f by a factor of 3, then reflect the graph about the x -axis, and finally shift the graph up $\frac{1}{4}$ unit.

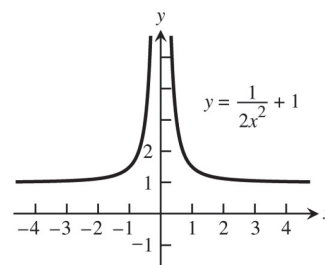
55. Reflection of the graph of $y = \sqrt{x}$ about the x -axis followed by a horizontal compression by a factor of $\frac{1}{2}$ then a shift left 2 units.



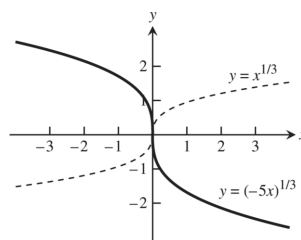
56. Reflect the graph of $y = x$ about the x -axis, followed by a vertical compression of the graph by a factor of 3, then shift the graph up 1 unit.



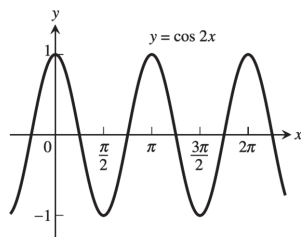
57. Vertical compression of the graph of $y = \frac{1}{x^2}$ by a factor of 2, then shift the graph up 1 unit.



58. Reflect the graph of $y = x^{1/3}$ about the y -axis, then compress the graph horizontally by a factor of 5.

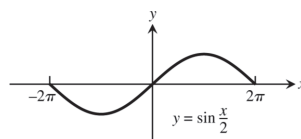


59.



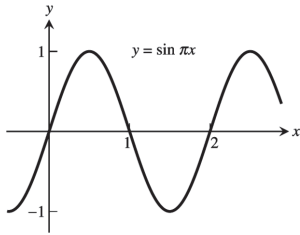
period = π

60.



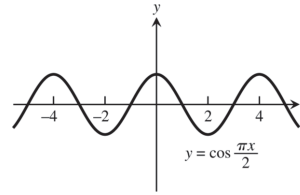
period = 4π

61.



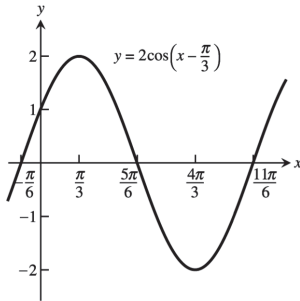
period = 2

62.



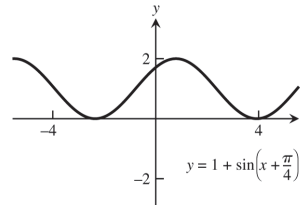
period = 4

63.



period = 2π

64.



period = 2π

65. (a) $\sin B = \sin \frac{\pi}{3} = \frac{b}{c} = \frac{b}{2} \Rightarrow b = 2 \sin \frac{\pi}{3} = 2 \left(\frac{\sqrt{3}}{2} \right) = \sqrt{3}$. By the theorem of Pythagoras,
 $a^2 + b^2 = c^2 \Rightarrow a = \sqrt{c^2 - b^2} = \sqrt{4 - 3} = 1$.

(b) $\sin B = \sin \frac{\pi}{3} = \frac{b}{c} = \frac{2}{c} \Rightarrow c = \frac{2}{\sin \frac{\pi}{3}} = \frac{2}{\left(\frac{\sqrt{3}}{2} \right)} = \frac{4}{\sqrt{3}}$. Thus, $a = \sqrt{c^2 - b^2} = \sqrt{\left(\frac{4}{\sqrt{3}} \right)^2 - (2)^2} = \sqrt{\frac{16}{3} - 4} = \sqrt{\frac{4}{3}} = \frac{2}{\sqrt{3}}$.

66. (a) $\sin A = \frac{a}{c} \Rightarrow a = c \sin A$

(b) $\tan A = \frac{a}{b} \Rightarrow a = b \tan A$

67. (a) $\tan B = \frac{b}{a} \Rightarrow a = \frac{b}{\tan B}$

(b) $\sin A = \frac{a}{c} \Rightarrow c = \frac{a}{\sin A}$

68. (a) $\sin A = \frac{a}{c}$

(b) $\sin A = \frac{a}{c} = \frac{\sqrt{c^2 - b^2}}{c}$

69. Let h = height of vertical pole, and let b and c denote the distances of points B and C from the base of the pole, measured along the flat ground, respectively.

Then, $\tan 50^\circ = \frac{h}{c}$, $\tan 35^\circ = \frac{h}{b}$, and $b - c = 10$.

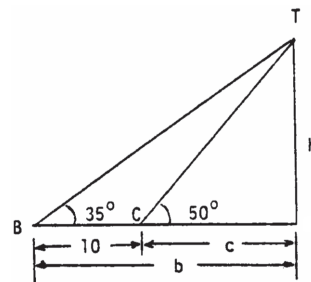
Thus, $h = c \tan 50^\circ$ and $h = b \tan 35^\circ = (c + 10) \tan 35^\circ$

$\Rightarrow c \tan 50^\circ = (c + 10) \tan 35^\circ$

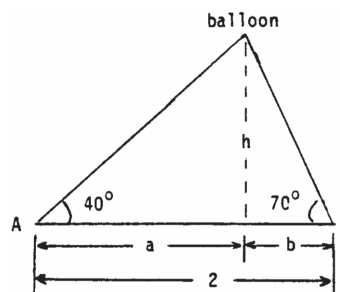
$\Rightarrow c(\tan 50^\circ - \tan 35^\circ) = 10 \tan 35^\circ$

$\Rightarrow c = \frac{10 \tan 35^\circ}{\tan 50^\circ - \tan 35^\circ} \Rightarrow h = c \tan 50^\circ$

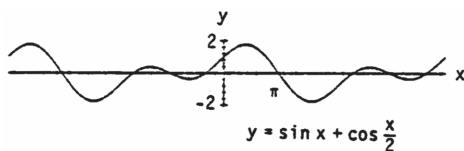
$= \frac{10 \tan 35^\circ \tan 50^\circ}{\tan 50^\circ - \tan 35^\circ} \approx 16.98$ m.



70. Let h = height of balloon above ground. From the figure at the right, $\tan 40^\circ = \frac{h}{a}$, $\tan 70^\circ = \frac{h}{b}$, and $a + b = 2$. Thus, $h = b \tan 70^\circ \Rightarrow h = (2 - a) \tan 70^\circ$ and $h = a \tan 40^\circ \Rightarrow (2 - a) \tan 70^\circ = a \tan 40^\circ$
 $\Rightarrow a(\tan 40^\circ + \tan 70^\circ) = 2 \tan 70^\circ$
 $\Rightarrow a = \frac{2 \tan 70^\circ}{\tan 40^\circ + \tan 70^\circ} \Rightarrow h = a \tan 40^\circ$
 $= \frac{2 \tan 70^\circ \tan 40^\circ}{\tan 40^\circ + \tan 70^\circ} \approx 1.3 \text{ km.}$

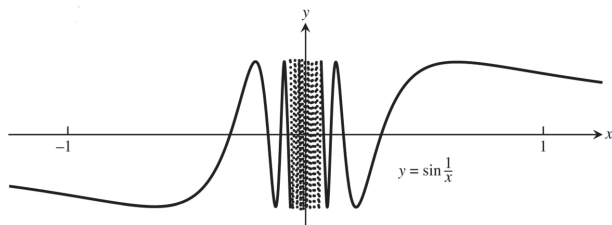


71. (a)



- (b) The period appears to be 4π .
 (c) $f(x + 4\pi) = \sin(x + 4\pi) + \cos\left(\frac{x + 4\pi}{2}\right) = \sin(x + 2\pi) + \cos\left(\frac{x}{2} + 2\pi\right) = \sin x + \cos \frac{x}{2}$
 since the period of sine and cosine is 2π . Thus, $f(x)$ has period 4π .

72. (a)

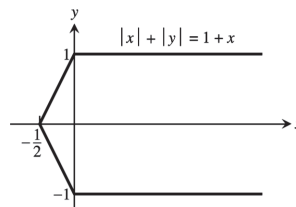


- (b) $D = (-\infty, 0) \cup (0, \infty); R = [-1, 1]$
 (c) f is not periodic. For suppose f has period p . Then $f\left(\frac{1}{2\pi} + kp\right) = f\left(\frac{1}{2\pi}\right) = \sin 2\pi = 0$ for all integers k .
 Choose k so large that $\frac{1}{2\pi} + kp > \frac{1}{\pi} \Rightarrow 0 < \frac{1}{(1/(2\pi)) + kp} < \pi$. But then $f\left(\frac{1}{2\pi} + kp\right) = \sin\left(\frac{1}{(1/(2\pi)) + kp}\right) > 0$
 which is a contradiction. Thus f has no period, as claimed.

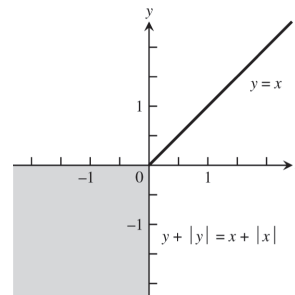
CHAPTER 1 ADDITIONAL AND ADVANCED EXERCISES

- There are (infinitely) many such function pairs. For example, $f(x) = 3x$ and $g(x) = 4x$ satisfy $f(g(x)) = f(4x) = 3(4x) = 12x = 4(3x) = g(3x) = g(f(x))$.
- Yes, there are many such function pairs. For example, if $g(x) = (2x + 3)^3$ and $f(x) = x^{1/3}$, then $(f \circ g)(x) = f(g(x)) = f((2x + 3)^3) = ((2x + 3)^3)^{1/3} = 2x + 3$.
- If f is odd and defined at x , then $f(-x) = -f(x)$. Thus $g(-x) = f(-x) - 2 = -f(x) - 2$ whereas $-g(x) = -(f(x) - 2) = -f(x) + 2$. Then g cannot be odd because $g(-x) = -g(x) \Rightarrow -f(x) - 2 = -f(x) + 2 \Rightarrow 4 = 0$, which is a contradiction. Also, $g(x)$ is not even unless $f(x) = 0$ for all x . On the other hand, if f is even, then $g(x) = f(x) - 2$ is also even: $g(-x) = f(-x) - 2 = f(x) - 2 = g(x)$.
- If g is odd and $g(0)$ is defined, then $g(0) = g(-0) = -g(0)$. Therefore, $2g(0) = 0 \Rightarrow g(0) = 0$.

5. For (x, y) in the 1st quadrant, $|x| + |y| = 1 + x$
 $\Leftrightarrow x + y = 1 + x \Leftrightarrow y = 1$. For (x, y) in the 2nd quadrant, $|x| + |y| = x + 1 \Leftrightarrow -x + y = x + 1$
 $\Leftrightarrow y = 2x + 1$. In the 3rd quadrant, $|x| + |y| = x + 1$
 $\Leftrightarrow -x - y = x + 1 \Leftrightarrow y = -2x - 1$. In the 4th quadrant, $|x| + |y| = x + 1 \Leftrightarrow x + (-y) = x + 1$
 $\Leftrightarrow y = -1$. The graph is given at the right.



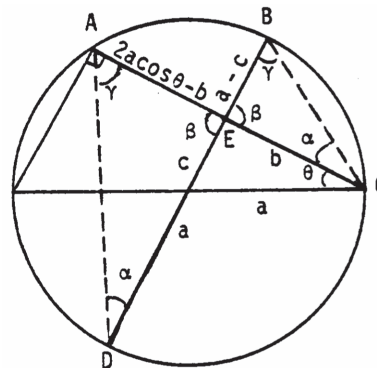
6. We use reasoning similar to Exercise 5.
- (1) 1st quadrant: $y + |y| = x + |x|$
 $\Leftrightarrow 2y = 2x \Leftrightarrow y = x$.
 - (2) 2nd quadrant: $y + |y| = x + |x|$
 $\Leftrightarrow 2y = x + (-x) = 0 \Leftrightarrow y = 0$.
 - (3) 3rd quadrant: $y + |y| = x + |x|$
 $\Leftrightarrow y + (-y) = x + (-x) \Leftrightarrow 0 = 0$
 \Rightarrow all points in the 3rd quadrant satisfy the equation.
 - (4) 4th quadrant: $y + |y| = x + |x|$
 $\Leftrightarrow y + (-y) = 2x \Leftrightarrow 0 = x$. Combining these results we have the graph given at the right:



7. (a) $\sin^2 x + \cos^2 x = 1 \Rightarrow \sin^2 x = 1 - \cos^2 x = (1 - \cos x)(1 + \cos x) \Rightarrow (1 - \cos x) = \frac{\sin^2 x}{1 + \cos x} \Rightarrow \frac{1 - \cos x}{\sin x} = \frac{\sin x}{1 + \cos x}$
 (b) Using the definition of the tangent function and the double angle formulas, we have

$$\tan^2\left(\frac{x}{2}\right) = \frac{\sin^2\left(\frac{x}{2}\right)}{\cos^2\left(\frac{x}{2}\right)} = \frac{\frac{1 - \cos\left(2\left(\frac{x}{2}\right)\right)}{2}}{\frac{1 + \cos\left(2\left(\frac{x}{2}\right)\right)}{2}} = \frac{1 - \cos x}{1 + \cos x}.$$

8. The angles labeled γ in the accompanying figure are equal since both angles subtend arc CD . Similarly, the two angles labeled α are equal since they both subtend arc AB . Thus, triangles AED and BEC are similar which implies $\frac{a - c}{b} = \frac{2a \cos \theta - b}{a + c}$
 $\Rightarrow (a - c)(a + c) = b(2a \cos \theta - b)$
 $\Rightarrow a^2 - c^2 = 2ab \cos \theta - b^2$
 $\Rightarrow c^2 - a^2 + b^2 - 2ab \cos \theta.$



9. As in the proof of the law of sines of Section 1.3, Exercise 61, $ah = bc \sin A = ab \sin C = ac \sin B$
 \Rightarrow the area of $ABC = \frac{1}{2}(\text{base})(\text{height}) = \frac{1}{2}ah = \frac{1}{2}bc \sin A = \frac{1}{2}ab \sin C = \frac{1}{2}ac \sin B$.
10. As in Section 1.3, Exercise 61, $(\text{Area of } ABC)^2 = \frac{1}{4}(\text{base})^2(\text{height})^2 = \frac{1}{4}a^2h^2 = \frac{1}{4}a^2b^2 \sin^2 C$
 $= \frac{1}{4}a^2b^2(1 - \cos^2 C)$. By the law of cosines, $c^2 = a^2 + b^2 - 2ab \cos C \Rightarrow \cos C = \frac{a^2 + b^2 - c^2}{2ab}$. Thus,
 $(\text{area of } ABC)^2 = \frac{1}{4}a^2b^2(1 - \cos^2 C) = \frac{1}{4}a^2b^2\left(1 - \left(\frac{a^2 + b^2 - c^2}{2ab}\right)^2\right) = \frac{a^2b^2}{4}\left(1 - \frac{(a^2 + b^2 - c^2)^2}{4a^2b^2}\right)$
 $= \frac{1}{16}\left(4a^2b^2 - (a^2 + b^2 - c^2)^2\right) = \frac{1}{16}[(2ab + (a^2 + b^2 - c^2))(2ab - (a^2 + b^2 - c^2))]$
 $= \frac{1}{16}[(a + b)^2 - c^2)(c^2 - (a - b)^2)] = \frac{1}{16}[(a + b + c)((a + b) - c)(c + (a - b))(c - (a - b))]$
 $= \left[\left(\frac{a + b + c}{2}\right)\left(\frac{-a + b + c}{2}\right)\left(\frac{a - b + c}{2}\right)\left(\frac{a + b - c}{2}\right)\right] = s(s - a)(s - b)(s - c),$ where $s = \frac{a + b + c}{2}$.
 Therefore, the area of ABC equals $\sqrt{s(s - a)(s - b)(s - c)}$.

42 Chapter 1 Functions

11. If f is even and odd, then $f(-x) = -f(x)$ and $f(-x) = f(x) \Rightarrow f(x) = -f(x)$ for all x in the domain of f . Thus $2f(x) = 0 \Rightarrow f(x) = 0$.
12. (a) As suggested, let $E(x) = \frac{f(x) + f(-x)}{2} \Rightarrow E(-x) = \frac{f(-x) + f(-(-x))}{2} = \frac{f(x) + f(-x)}{2} = E(x) \Rightarrow E$ is an even function. Define $O(x) = f(x) - E(x) = f(x) - \frac{f(x) + f(-x)}{2} = \frac{f(x) - f(-x)}{2}$. Then $O(-x) = \frac{f(-x) - f(-(-x))}{2} = \frac{f(-x) - f(x)}{2} = -\left(\frac{f(x) - f(-x)}{2}\right) = -O(x) \Rightarrow O$ is an odd function $\Rightarrow f(x) = E(x) + O(x)$ is the sum of an even and an odd function.
- (b) Part (a) shows that $f(x) = E(x) + O(x)$ is the sum of an even and an odd function. If also $f(x) = E_1(x) + O_1(x)$, where E_1 is even and O_1 is odd, then $f(x) - f(x) = 0 = (E_1(x) + O_1(x)) - (E(x) + O(x))$. Thus, $E(x) - E_1(x) = O_1(x) - O(x)$ for all x in the domain of f (which is the same as the domain of $E - E_1$ and $O - O_1$). Now $(E - E_1)(-x) = E(-x) - E_1(-x) = E(x) - E_1(x)$ (since E and E_1 are even) $= (E - E_1)(x) \Rightarrow E - E_1$ is even. Likewise, $(O_1 - O)(-x) = O_1(-x) - O(-x) = -O_1(x) - (-O(x)) = -O_1(x) + O(x) = -(O_1(x) - O(x)) = -(O_1 - O)(x) \Rightarrow O_1 - O$ is odd. Therefore, $E - E_1$ and $O_1 - O$ are both even and odd so they must be zero at each x in the domain of f by Exercise 11. That is, $E_1 = E$ and $O_1 = O$, so the decomposition of f found in part (a) is unique.
13. $y = ax^2 + bx + c = a\left(x^2 + \frac{b}{a}x + \frac{b^2}{4a^2}\right) - \frac{b^2}{4a} + c = a\left(x + \frac{b}{2a}\right)^2 - \frac{b^2}{4a} + c$
- (a) If $a > 0$ the graph is a parabola that opens upward. Increasing a causes a vertical stretching and a shift of the vertex toward the y -axis and upward. If $a < 0$ the graph is a parabola that opens downward. Decreasing a causes a vertical stretching and a shift of the vertex toward the y -axis and downward.
- (b) If $a > 0$ the graph is a parabola that opens upward. If also $b > 0$, then increasing b causes a shift of the graph downward to the left; if $b < 0$, then decreasing b causes a shift of the graph downward and to the right. If $a < 0$ the graph is a parabola that opens downward. If $b > 0$, increasing b shifts the graph upward to the right. If $b < 0$, decreasing b shifts the graph upward to the left.
- (c) Changing c (for fixed a and b) by Δc shifts the graph upward Δc units if $\Delta c > 0$, and downward $-\Delta c$ units if $\Delta c < 0$.
14. (a) If $a > 0$, the graph rises to the right of the vertical line $x = -b$ and falls to the left. If $a < 0$, the graph falls to the right of the line $x = -b$ and rises to the left. If $a = 0$, the graph reduces to the horizontal line $y = c$. As $|a|$ increases, the slope at any given point $x = x_0$ increases in magnitude and the graph becomes steeper. As $|a|$ decreases, the slope at x_0 decreases in magnitude and the graph rises or falls more gradually.
- (b) Increasing b shifts the graph to the left; decreasing b shifts it to the right.
- (c) Increasing c shifts the graph upward; decreasing c shifts it downward.

15. Each of the triangles pictured has the same base $b = v\Delta t = v(1 \text{ sec})$. Moreover, the height of each triangle is the same value h . Thus $\frac{1}{2}(\text{base})(\text{height}) = \frac{1}{2}bh = A_1 = A_2 = A_3 = \dots$. In conclusion, the object sweeps out equal areas in each one second interval.

